



TRADITIONS WOOD, COMPOSITE AND
FAUX WOOD COLLECTION



Price List and Product Information Guide
April 2011

*G*raber, a leading brand for decades, has given design professionals the resources to define what window fashion is today – the confident expression of personal style. From custom quality horizontal and vertical blinds, to soft fabric shades to the decorative hardware that frames your window with artistic style, the Graber brand offers everything you need to create classic designs. Depend on Graber for a look that's timeless.

PRODUCT OVERVIEW:

All products feature the SureClose® headrail for optimum closure.

Traditions® Westmont Collection

- Slats are crafted of the finest North American hardwood
- Choice of stained, painted or specialty finishes

Traditions® Crystal Lake Collection

- Engineered composite provides superior stability and durability
- Choices of solid and realistic woodgrains

Lake Forest™ Collection

- UV stabilized formulations
- Available in 2" and 2½" slats

NEW

- Cordless Lift Option on 2" Traditions Westmont Collection
 - Wand control standard, cord control optional
 - Sturdy 2x2 headrail
 - NoHoles™ privacy option is standard

TABLE OF CONTENTS

FEATURES	
Overview	2
Grabber Wood Story	4
Grabber Wood Characteristics	5
How to Place an Order	6
Measuring Instructions	7
Valance Ordering Information	8
Valance Features	9
Product Features	10
SureClose® Headrail System	11
PRICING	
THE WESTMONT COLLECTION	
Traditions® 1" Wood, Stained and Painted Colors	12-13
Traditions 2" Wood, Stained and Painted Colors	14-15
Traditions 2" Sandblast and Bamboo Painted Colors	16-17
Traditions 2" Ash	18-19
Traditions 2½" Shutter Style	20-21
THE CRYSTAL LAKE COLLECTION	
Traditions 2" Composite, Woodgrain Colors	22-23
Traditions 2" Composite, Solid Colors	24-25
THE LAKE FOREST COLLECTION	
Lake Forest 2" Faux Wood	26-27
Lake Forest 2½" Faux Wood	28-29
OPTIONS	
Options Chart	30
NoHoles™ Privacy Option, Slat Features, Cordless Lift System	31
Valance Options • Valance Pricing	32
Multiple Blinds on One Headrail, Cut-Out Blinds	33
Bay and Corner Window Blinds	34-35
AutoMate® Remote Control Option	36
GENERAL INFORMATION	
Slat Count Tables	37-39
Slat Rout and Ladder Count Tables	40-43
Warranties & Cleaning Instructions	44

THE GRABER WOOD STORY

THE GRABER WOOD STORY ... EXPERIENCE THE DIFFERENCE

Quality of Wood Defines a Blind's Quality

We use only 100% North American hardwood in the construction of our wood blinds because of its light weight, consistent color, hardness, structural stability, and attractive grain.

Sound Forestry Techniques

We work only with foresters who practice "sustained yield forest management" – nearly twice as much hardwood grows as is harvested in the U.S. each year. The volume of hardwoods in American forests today is 90% larger than it was 50 years ago.

Preserving Our Natural Resources

Our SWF Wood Products facility consumes recycled sawdust and wood shavings, generating the heat required to dry lumber for a completely self-sufficient manufacturing process. Our Reynosa, Mexico fabrication and finishing facility is 99.7% pollution free, above any U.S. standard.

SWF Wood Products, Grayling, Michigan

We have control over the quality of wood used – we control the process from green lumber to finished blinds. Hardwoods used in crafting Graber wood blinds are kiln dried and moulded at our Springs Wood Products facility in Grayling, Michigan. The wood is dried slowly to strict wood blinds specifications because structural change can occur when moisture is removed. Moulding and sanding operations provide the highest quality surface, free of defects.

SWF Fabrication and Finishing, Reynosa, Mexico

At our state-of-the art finishing plant in Reynosa, Mexico, components are carefully sorted prior to fabrication for color uniformity and wood characteristics. We sort wood as an end user, rather than a finishing vendor, taking out defects in a climate-controlled building. To finish the blind, we use only high quality paints and stains; on-site certified color technicians provide both application and quality control.

What Makes Graber Traditions® Blinds Different from the Rest?

- Wood blinds are made from 100% North American hardwoods, the premier wood used in the construction of blinds
- SWF Wood Products and Finishing facilities provide state-of-the-art technologies and processes
- Expanded choice of finishes with PureGrain™ Finish – vibrant stains that showcase the natural grain of the wood
- Unique valance choices, solid cloth tapes, three arch choices and more
- Traditions Composite blinds with a genuine woodgrain appearance
- The best Customer Service team in the industry – trained to answer any questions about Graber Traditions blinds
- Limited Lifetime Warranty

TRADITIONS® WOOD BLINDS

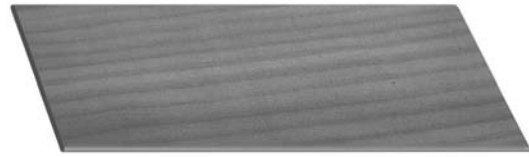
GRABER WOOD CHARACTERISTICS

Wood used to manufacture Graber Traditions wood blinds has many natural characteristics which make it truly unique... no two pieces of hardwood are alike. The following are all natural characteristics of wood and we do not consider them to be defects:

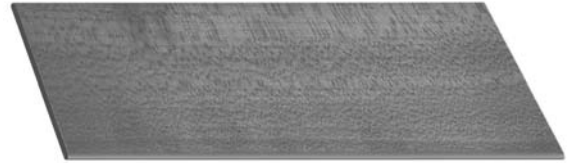
- Grain – The direction, size, and appearance of wood fibers vary greatly depending on where the wood is cut from within the tree
- Burl Grain – Formed from an irregular growth on the outer edge of the tree
- Bird's Eye – Small area on the surface of the board where fibers are contorted to form circular figures that resemble birds' eyes
- Pin Knots – Vary in size, shape, structure and color
- Mineral Marks – Dark or discolored area caused by minerals which the tree extracts from the water or soil; can be either a streak or a stain, usually blackish blue
- Knotty Pine – Material contains markings that are more extreme than in standard products

Please be assured that these markings in no way affect the durability or the structural integrity of the blind.

Natural variations in color and grain effect are inherent in the beauty of wood. These variations are within established industry guidelines and should be expected. In addition, blinds may stain slightly darker or lighter than the samples shown in the sample book.



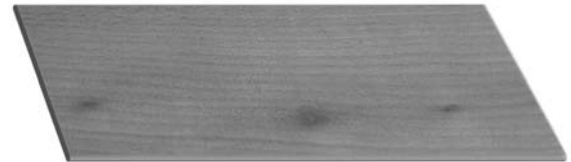
Flat Grain



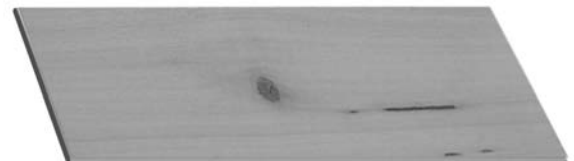
Grain Change



Tiger Striping



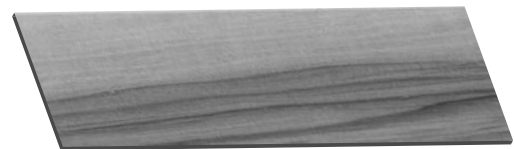
Burl/Bird's Eye



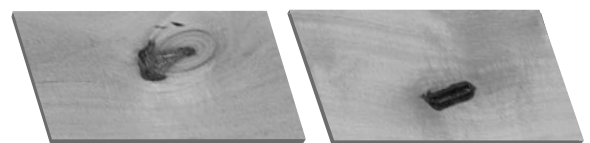
Pin Knots



Mineral Marks



Knotty Pine



Knotty Pine

HOW TO PLACE AN ORDER

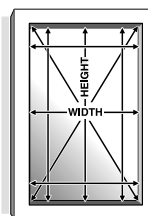
The following must be specified to place your order:

NOTE: Multiple shades on one headrail may be required for certain sizes, see "Size Considerations" on the appropriate price page.

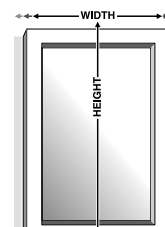
1. QUANTITY of blinds

2. SIZE OF BLINDS: width first, then height.
See page 7 for Measuring Instructions.

3. INSIDE OR OUTSIDE OF MOUNT:
For inside window frame installation, mark order "Inside Mount". For outside window frame installation, mark order "Outside Mount".



INSIDE MOUNT



OUTSIDE MOUNT

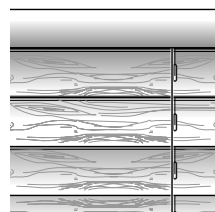
4. LIFT AND TILT LOCATIONS:
Indicate whether controls should be located on the left or right side of the blind (tilt left/lift right is standard).
See availability on page 30.

5. BLIND STYLES:
When placing your order specify:

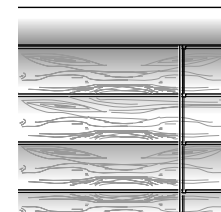
- Type of blind
- Color name
- Color number

6. OPTIONS:
The following options may be found on pages 30-36.

- | | |
|-------------------------|------------------------|
| • Cut-outs | • Cord tilter |
| • Installation hardware | • Cloth tapes |
| • Valance style | • NoHoles™ |
| • Valance returns | • AutoMate® |
| • Wand tilt | • Cordless Lift Option |



Standard



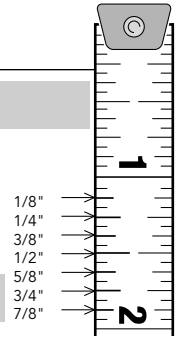
NoHoles

7. DELIVERY: Indicate "ship to" address.

TO PRICE YOUR ORDER:

1. Prices shown in this manual are base prices only.
2. Select blind type, size, color and options.
3. Add together the base price for the blind and options to determine total price of the blind.

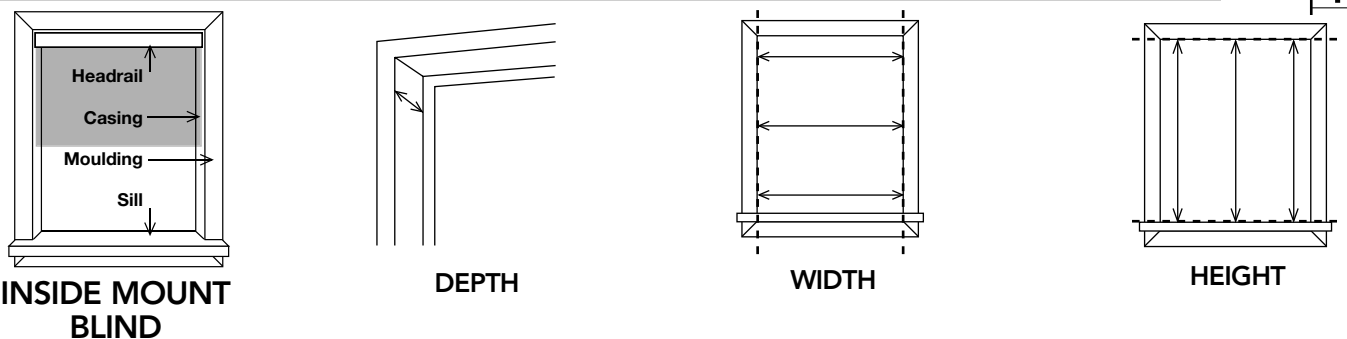
MEASURING INSTRUCTIONS



TIPS AND TOOLS

- Steel tape measure — do not use cloth measuring tape
- Round measurements to the nearest 1/8"
- Pencil
- Clearly record measurements – width vs. height
- Measure each window and identify window locations – size variances are common

HOW TO MEASURE FOR AN INSIDE MOUNT



INSIDE MOUNT BLIND

DEPTH

WIDTH

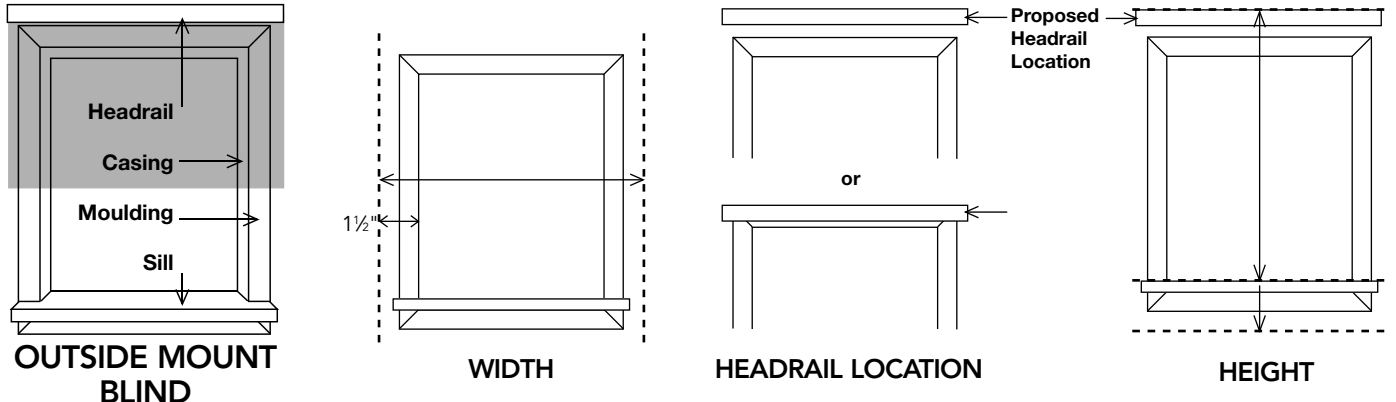
HEIGHT

1. **Measure Depth:** To determine if window casing has enough depth for an inside mount window treatment see chart to the right.
2. **Measure Width:** Measure the inside width of window casing in three places. Record narrowest measurement.
3. **Measure Height:** Measure the inside height from the top of window casing to top of sill in three places. Record longest measurement.

MOUNTING DEPTH REQUIREMENTS	
Minimum depth required for inside mount	$\frac{3}{4}'' - 1''$ $1\frac{3}{4}'' - 2''$ & $2\frac{1}{2}''$

Note: Do not take any deductions for clearance. The manufacturer will take necessary deductions for a perfect fit.

HOW TO MEASURE FOR AN OUTSIDE MOUNT



OUTSIDE MOUNT BLIND

WIDTH

HEADRAIL LOCATION

HEIGHT

1. **Measure Width:** Measure width to be covered. We recommend 1 1/2" overlap on each side (3" total) for optimum light control and privacy. Record measurement.
2. **Determine Headrail Location** Determine if headrail will be on molding or above molding and mark spot.
3. **Measure Height:** Measure height to be covered from top of headrail location to top of sill or lower if overlap is desired for light control and privacy. Record measurement.

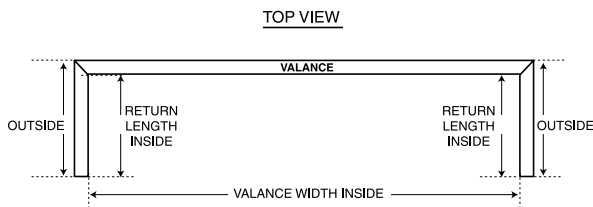
Note: The manufacturer makes NO deductions on outside mount installations.

HOW TO MEASURE AND ORDER VALANCES

Valances are supplied with your order in one of the following styles depending on how your blind will be mounted. For a more custom look, the valance and the returns may be special ordered to your measurements.

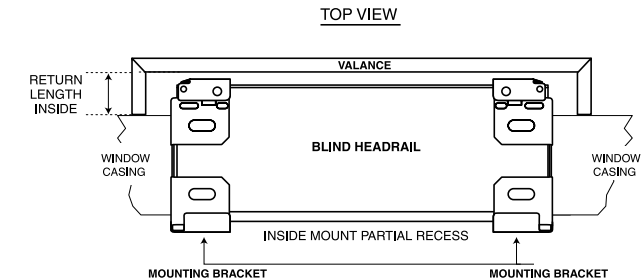
NOTE: Valance with returns are measured and cut from the **INSIDE (BACKSIDE)** of the valance to ensure the most accurate fit when installed over the headrail or window frame.

Customers ordering their valances as OUTSIDE MOUNT normally require that the valances be entered and manufactured **WITH** returns. However, outside mount valances are available **WITHOUT** returns if needed.



NOTE: Outside mount valances will **AUTOMATICALLY** be entered with returns unless otherwise specified. Orders entered electronically **WILL BE REQUIRED TO SELECT WITH OR WITHOUT RETURNS** in their system during entry.

Customers ordering their valances as INSIDE MOUNT normally require that the valances be entered and manufactured **WITHOUT** returns. Valances without returns have ends that are cut straight and look best when the blind and the valance are fully recessed into the window casing. However, inside mount valances are available **WITH** returns for blinds that are unable to be fully recessed into the window casing. Additional ordering information:



- If projection brackets are requested at the time of order for valances with returns, longer returns will automatically be sent.
- Please state at the time of order if the valance and return measurements are for the **EXACT** size required so that no additions or deductions are made.
- Valance projection is different if the blind has a wand tilt or cord tilt, or if the slat size is wider than 2". Please refer to valance chart for specifics.

TRADITIONS® WOOD, COMPOSITE AND LAKE FOREST® FAUX WOOD VALANCE ORDERING INFORMATION

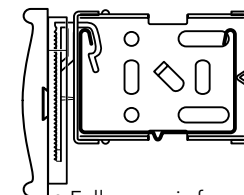
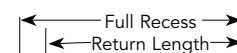
BLIND TYPE	VALANCE STYLE	TILT TYPE	RETURN LENGTH	FULL RECESS DEPTH
1" Traditions Wood	Signature	Wand	2 1/4"	2 1/8"
2" Traditions Wood	Signature	Wand	3 3/8"	3 7/8"
		Cord	2 1/8"	3 1/4"
	Legacy	Wand	3 3/8"	4"
		Cord	2 1/8"	3 3/8"
2" Traditions Wood Cordless Lift System	Signature	Wand	2 1/4"	3 1/8"
		Cord	3 3/8"	3 3/4"
	Legacy	Wand	3 3/8"	4 1/8"
		Cord	2 1 1/8"	3 3/8"
2 1/2" Traditions Wood	Signature	Cord	3 3/8"	4 7/8"
	Legacy	Cord	3 3/8"	3 1/2"
2 1/2" Traditions Shutter Style	Signature	Cord	4"	4 3/8"
	Legacy	Cord	4"	4 3/8"
2" Traditions Composite	Standard	Wand	3 3/8"	3 3/8"
		Cord	2 1/8"	3 1/4"
		Legacy	Wand	3 3/4"
		Cord	2 1/8"	3 3/8"
2" Lake Forest Faux Wood	Eloquence	Cord	2 1/8"	3 1/2"
2 1/2" Lake Forest Faux Wood	Eloquence	Cord	3 3/8"	4 3/8"

NOTE: All measurements listed above are to the inside.

DETERMINING A SPECIAL RETURN LENGTH FOR INSIDE MOUNT BLINDS NOT FULLY RECESSED:

1. Using the chart at left, locate the standard return length by selecting your blind type, valance type and tilt type.
2. Measure the recessed space (depth) of your window casing.
3. Subtract the recessed space measurement from the standard return length.
4. The difference will be the Special Return Length you will need to order for your **INSIDE MOUNT** valances.

NOTE: Minimum return length is 1/2", returns 1/2" - 1" will be glued.



- Full recess is from front of valance to wall.
- Return length is from inside miter to wall.

VALANCE SIZE LIMITS

Slat Size/Style	Inside Mount	Outside Mount
1", 2", 2 1/2" Wood	94" FBW	92 1/2" FBW
2" Composite, 2" & 2 1/2" Faux Wood	106 3/8" FBW	105 3/8" FBW

Note: Continuous valances wider than sizes shown above will be two or more sections spliced together. No maximum width for spliced valances. FBW = Finished blind width

VALANCE FEATURES

WOOD VALANCES



STANDARD VALANCE
2" Bamboo, standard, no charge



SIGNATURE VALANCE
1" and 2" Wood standard, no charge
2" Sandblast, standard, no charge
2 1/2" Wood Shutter Style optional, no charge



LEGACY VALANCE
2" Wood, surcharge option (standard with cordless lift option)
2" Sandblast Wood, surcharge option (standard with cordless lift option)
2" Ash Woodtones, standard no charge
2 1/2" Wood Shutter Style, standard no charge

FAUX WOOD VALANCES



STANDARD VALANCE
2" Composite, no charge



LEGACY VALANCE
2" Composite, surcharge option



ELOQUENCE VALANCE
2" and 2 1/2" Faux Wood standard, no charge

PRODUCT FEATURES

TRADITIONS™ WESTMONT COLLECTION – WOOD BLINDS

- Crafted of North American hardwoods
- 2½" Shutter Style blinds: Unique slat design resembles a shutter louver; trapezoid bottomrail
- Unique special wood finish choices including sandblast, and stained finishes on Ash and Bamboo
- PureGrain™ Finish – vibrant staining process that showcases the natural grain of the wood
- 1", 2", and 2½" slat sizes available
- Cordless Lift System available on 2" wood slat with wand tilt (standard), cord tilt optional
- SureClose® headrail for optimum closure and light control (available on all 2" and 2½", not available with cordless lift option)
- Trapezoid bottomrail for superior closure on 2" and 2½" slats; rectangular bottomrail on Bamboo
- Color-coordinated ladders and cords
- Coordinating wood tassels
- Cord tilt standard, wand tilt optional on 2" blinds (except Bamboo); wand tilt standard on 1" blinds
- Control location options
- Standard and decorative valances available
- Valance returns standard with outside mounts; optional on inside mounts
- NoHoles™ option available on 2" and 2½" Shutter Style slats for maximum privacy
- Decorative cloth tapes available on 2" & 2½" slats (not available with NoHoles option)
- Limited lifetime warranty

TRADITIONS CRYSTAL LAKE COLLECTION – COMPOSITE BLINDS

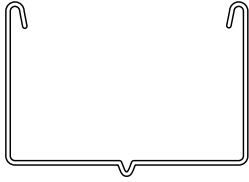
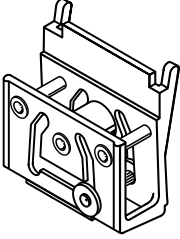
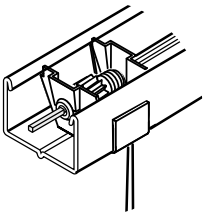
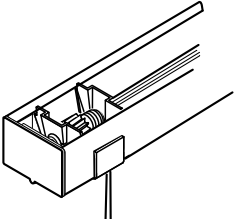
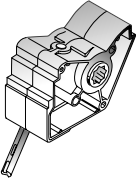
- Engineered composite provides superior stability and durability
- Moisture resistant 2" slats will not warp under humid conditions
- UV stabilized formulation
- SureClose headrail for optimum closure and light control
- Trapezoid bottomrail for superior closure
- Color-coordinated wood tassels
- Color-coordinated ladders and cords
- Cord tilt standard, wand tilt optional up to 27 sq. ft.
- Control location options
- Standard and decorative valance available
- Valance returns standard with outside mounts; optional on inside mounts
- NoHoles option available for maximum privacy
- Decorative cloth tapes available (not available with NoHoles option)
- Limited lifetime warranty

LAKE FOREST™ COLLECTION – FAUX WOOD BLINDS

- Looks like wood, priced much lower
- Consistent quality; moisture-proof slats won't warp
- UV stabilized formulation
- Cord tilt only
- Color-coordinated ladders and cords
- Control location options (standard/reversed only)
- Valance returns standard with outside mounts; optional on inside mounts
- NoHoles option available on 2" slats for maximum privacy
- Easy to clean
- Limited lifetime warranty

SURECLOSE® HEADRAIL SYSTEM

STANDARD ON ALL 2" AND 2½" BLINDS

FEATURES	BENEFITS
Headrail* 	<ul style="list-style-type: none"> • Features light-blocking lip for tighter closure • Durable metal construction • Low profile – only 1½" high
Crash-Proof Cord Lock 	<ul style="list-style-type: none"> • Long-lasting metal construction • Reduces drop back for tighter stack
Standard Cord Tilt 	<ul style="list-style-type: none"> • Engineered for precise control and ease of tilting • Required on all composite blinds greater than 27 sq. ft. and faux wood blinds • Required on 2" Bamboo and 2½" Shutter Style wood blinds
End Cap 	<ul style="list-style-type: none"> • Gives finished look • Adds strength
Heavy-Duty Wand Tilt – No-Charge Option 	<ul style="list-style-type: none"> • Die cast gears for enhanced precision to slat tilting and closure • Increases durability – reduces breakage • Available on 2" wood • Available on 2" composite faux wood up to 27 sq. ft.

* Cordless lift system utilizes a sturdy 2" x 2" headrail system.

TRADITIONS® 1" WOOD BLINDS THE WESTMONT COLLECTION

FEATURES AND BENEFITS

- PureGrain™ Finish, exclusive to Graber, highlights the natural characteristics of wood (available on stains only)
- Crafted of North American hardwood
- Color-coordinated ladders and cords
- Matching tassels
- Wand tilt standard, cord tilt not available
- Control location options
- Standard valance available
- Durable steel 1" x 1½" headrail
- Limited lifetime warranty

COLORS

1" STAINED COLORS

Cherry Wood	0014
Cappuccino	0546
Golden Oak	0030
Honey Maple	0013
Natural	0007
Peru	0688
Walnut	0012

1" PAINTED COLORS

Aspen White0691
Designer White0055
Dover White0683
Snowflake0603
Swiss Coffee0692

Note: Color of wood may vary slightly due to the natural characteristics of wood. See page 5 for more information.

SIZE CONSIDERATIONS

Minimum blind width	9" outside mount 9½" inside mount Exceptions: – 9" to 13¾" standard or reverse controls only – 13⅙" same side control
Maximum single blind width	96"
Maximum width: Multiple blinds on one headrail	120"
Minimum blind height	10"
Maximum blind height	120"
Minimum depth required for inside mount	¾"

NOTE: For multiple blinds, there is a ¼" gap between blinds

OPTIONS

NO CHARGE OPTIONS

- Bay and Corner Windows No Charge
- Cut-outs No Charge
- Hold-down brackets (upon request). No Charge
- Projection brackets No Charge
- Wand tilt standard (cord tilt not available)

VALANCES

- Valance descriptions. see pages 9 & 32
- Valance returns standard with outside mounts . . No Charge (Available upon request for inside mounts. For valance measuring instructions, see page 8.)

SURCHARGE OPTIONS

- Multiple Blinds on One Headrail:
Two or three blinds to left of heavy line \$32
Standard to right of heavy line No Charge
- **Not available with cloth tapes or NoHoles™**

NOTE: Slat alignment cannot be guaranteed on side by side blinds, with the exception of multiple blinds on one headrail.

VALANCE



SIGNATURE VALANCE
1" Wood standard,
no charge

TRADITIONS® 2" WOOD BLINDS THE WESTMONT COLLECTION

FEATURES AND BENEFITS

- PureGrain™ Finish, exclusive to Graber, highlights the natural characteristics of wood (available on stains only)
- Crafted of North American hardwood
- Color-coordinated ladders and cords
- SureClose® headrail (1½" x 2¼") features lightblocking lip for tighter closure (not available with cordless)
- Cord tilt standard, wand tilt optional
- Cordless Lift System; wand tilt standard, cord tilt optional (only available with NoHoles™)
- Trapezoid bottomrail for superior closure
- NoHoles™ option available for maximum privacy (standard with cordless option)
- Decorative cloth tapes option (not available with NoHoles or cordless option)
- Control location options
- Limited lifetime warranty

SIZE CONSIDERATIONS

	Standard	Cordless
Minimum blind width:	9" outside mount 9½" inside mount Exceptions: – 9" to 11 ⁵ / ₁₆ " are center tilt only – 12" to 16" standard or reverse standard controls only – 16 ¹ / ₁₆ " minimum for same side controls	18" exact Exception: – 18 to 22" exact width, maximum height 53"
Maximum single blind width	96"	78"
Maximum width: Multiple blinds on one headrail	120"	120"
Minimum blind height	10"	10"
Maximum blind height:	120"	84"
Minimum depth required for inside mount	¾"	¾"

NOTE: For multiple blinds, there is a ¼" gap between blinds; for NoHoles there is a ½" gap between blinds.

VALANCES



SIGNATURE VALANCE
2" Wood standard, no charge



LEGACY VALANCE
2" Wood, surcharge option (standard with cordless lift system)

COLORS

2" STAINED

Cappuccino	1546
Cherry Wood	1014
Dark Cherry	1316
Golden Oak	1030
Honey Maple	1013
Knotty Pine	1515
Light Oak	1010
Natural	1007
Nutshell	1687
Peru	1688
Sienna	1685
Tuscany	1578
Walnut	1012

2" PAINTED COLORS

Antique White	1026
Aspen White	1691
Bone	1024
Designer White	1055
Dover White	1683
Snowflake	1603
Swiss Coffee	1692

Note: Color of wood may vary slightly due to the natural characteristics of wood. See page 5 for more information.

CLOTH TAPES

1½" CLOTH TAPES

Beige	2011
Black	2033
Chocolate	2353
Cocoa	2297
Duck White	2136
Forest	2234
Light Beige	2137
Maroon	2360
Moss	2500
Navy	2369
Taupe	2659
Toffee	2296
Wheat	2710
White	2005
White Smoke	2617

1" CLOTH TAPES

Black	1033
Cocoa	1297
Duck White	1136
Natural	1864
White Smoke	1617

OPTIONS

NO CHARGE OPTIONS:

- Bay and Corner Windows No Charge
- Cord tilt standard; wand tilt optional. No Charge
- Cut-outs No Charge
- Hold-down brackets (upon request). No Charge
- Projection brackets No Charge
- Shims (upon request) No Charge

CORNICES

- See Cornice and Valance price list for product specifications.

VALANCES

- Valance descriptions see pages 9 & 32
- Valance returns standard with outside mounts No Charge (Available upon request for inside mounts. For valance measuring instructions, see page 8.)
- Legacy Valance no charge with Cordless option

SURCHARGE OPTIONS:

- AutoMate® see page 36
- Cordless: Single blind \$75
Multiple blinds on one headrail \$150
- Multiple Blinds on One Headrail:
Two or three blinds to left of heavy line \$32
Standard to right of heavy line No Charge

NOTE: Slat alignment cannot be guaranteed on side by side blinds, with the exception of multiple blinds on one headrail.

TRADITIONS® SPECIAL WOODS BLINDS – SANDBLAST & BAMBOO

THE WESTMONT COLLECTION

FEATURES AND BENEFITS

- Crafted of North American hardwood
- Color-coordinated ladders and cords
- SureClose® headrail (1½" x 2¼") features lightblocking lip for tighter closure (not available with cordless lift option)
- Cord tilt standard, wand tilt optional
- Trapezoid bottomrail for superior closure (rectangle bottomrail on Bamboo)
- NoHoles™ option available for maximum privacy
- Sandblast only: Cordless Lift System wand tilt standard, cord tilt optional (only available with NoHoles™)
- Decorative cloth tape option (not available with NoHoles or cordless options)
- Control location options
- Limited lifetime warranty

SIZE CONSIDERATIONS

	Standard	Sandblast-Cordless
Minimum blind width:	9" outside mount 9½" inside mount Exceptions: – 9" to 11¼" are center tilt only – 12" to 16" standard or reverse standard controls only – 16¼" minimum for same side controls	18" exact Exception: – 18 to 22" exact width, maximum height 53"
Maximum single blind width	96"	78"
Maximum width: Multiple blinds on one headrail	120"	120"
Minimum blind height	10"	10"
Maximum blind height:	120"	84"
Minimum depth required for inside mount	¾"	¾"

NOTE: For multiple blinds, there is a ¼" gap between blinds; for NoHoles there is a ½" gap between blinds.

VALANCES



SIGNATURE VALANCE

2" Wood standard, no charge



LEGACY VALANCE

2" Wood, surcharge option (standard with cordless lift system)



BAMBOO VALANCE
standard, no charge

COLORS

SANDBLAST

White Sandblast 1324
True White Sandblast 1544

2" BAMBOO*

Natural B007
Light Oak B010

Note: Color of wood may vary slightly due to the natural characteristics of wood. See page 5 for more information.

*Bamboo may have visual inconsistencies in color and grain. These unique characteristics are inherent in this natural material and are not considered defects. Exact color matches cannot be guaranteed

CLOTH TAPES

1½" CLOTH TAPES

Beige 2011
Black 2033
Chocolate 2353
Cocoa 2297
Duck White 2136
Forest 2234
Light Beige 2137
Maroon 2360
Moss 2500
Navy 2369
Taupe 2659
Toffee 2296
Wheat 2710
White 2005
White Smoke 2617

1" CLOTH TAPES

Black 1033
Cocoa 1297
Duck White 1136
Natural 1864
White Smoke 1617

OPTIONS

NO CHARGE OPTIONS:

- Bay and Corner Windows No Charge
- Cord tilt standard; wand tilt optional No Charge
- Cut-outs No Charge
- Hold-down brackets (upon request) No Charge
- Projection brackets No Charge
- Shims (upon request) No Charge

CORNICES

- See Cornice and Valance price list for product specifications.

VALANCES

- Valance descriptions see pages 9 & 32
- Valance returns standard with outside mounts No Charge (Available upon request for inside mounts. For valance measuring instructions, see page 8.)
- Legacy Valance no charge with Cordless option

SURCHARGE OPTIONS:

- AutoMate® see page 36
- Cordless: Single blind \$75
Multiple blinds on one headrail \$150
- Multiple Blinds on One Headrail:
Two or three blinds to left of heavy line \$32
Standard to right of heavy line No Charge

NOTE: Slat alignment cannot be guaranteed on side by side blinds, with the exception of multiple blinds on one headrail.

TRADITIONS® SPECIAL WOODS THE WESTMONT COLLECTION

FEATURES AND BENEFITS

- PureGrain™ Finish, exclusive to Graber, highlights the natural characteristics of wood (available on stains only)
- Color-coordinated ladders and cords
- Matching tassels
- SureClose® headrail (1½" x 2¼") features lightblocking lip for tighter closure
- Cord tilt standard, wand tilt optional
- Trapezoid bottomrail for superior closure
- NoHoles™ option available for maximum privacy
- Decorative cloth tapes option available (not available with NoHoles option)
- Control location options
- Standard and optional valances available
- Limited lifetime warranty

SIZE CONSIDERATIONS

Minimum blind width	9" outside mount 9½" inside mount Exceptions: – 9" to 11 ¹⁵ / ₁₆ " are center tilt only – 12" to 16" standard or reverse standard controls only
Maximum single blind width	96"
Maximum width: Multiple blinds on one headrail	120"
Minimum blind height	10"
Maximum blind height	120"
Minimum depth required for inside mount	¾"

NOTE: For multiple blinds, there is a ¼" gap between blinds; for NoHoles there is a ½" gap between blinds.

VALANCE



LEGACY VALANCE
2" Wood, standard,
no charge

COLORS

2" ASH WOODTONES

Ash	6529
Auburn	6689
Ebony	6690
Oak	6037

Note: Color of wood may vary slightly due to the natural characteristics of wood. See page 5 for more information.

CLOTH TAPES

1½" CLOTH TAPES

Beige	2011
Black	2033
Chocolate	2353
Cocoa	2297
Duck White	2136
Forest	2234
Light Beige	2137
Maroon	2360
Moss	2500
Navy	2369
Taupe	2659
Toffee	2296
Wheat	2710
White	2005
White Smoke	2617

1" CLOTH TAPES

Black	1033
Cocoa	1297
Duck White	1136
Natural	1864
White Smoke	1617

OPTIONS

NO CHARGE OPTIONS:

- Bay and Corner Windows No Charge
- Cord tilt standard; wand tilt optional No Charge
- Cut-outs No Charge
- Hold-down brackets (upon request) No Charge
- Projection brackets No Charge
- Shims (upon request) No Charge

CORNICES

- See Cornice and Valance price list for product specifications.

VALANCES

- Valance descriptions see pages 9 & 32
- Valance returns standard with outside mounts No Charge (Available upon request for inside mounts. For valance measuring instructions, see page 8.)

SURCHARGE OPTIONS:

- AutoMate® see page 36
- Multiple Blinds on One Headrail:
Two or three blinds to left of heavy line \$32
Standard to right of heavy line No Charge

NOTE: Slat alignment cannot be guaranteed on side by side blinds, with the exception of multiple blinds on one headrail.

TRADITIONS® SHUTTER STYLE THE WESTMONT COLLECTION

FEATURES AND BENEFITS

- PureGrain™ Finish, exclusive to Graber, highlights the natural characteristics of wood (available on stains only)
- Color-coordinated ladders and cords
- Matching tassels
- SureClose® headrail (1½" x 2¼") features lightblocking lip for tighter closure
- Trapezoid bottomrail for superior closure
- NoHoles™ option available for maximum privacy
- Decorative cloth tapes option available (not available with NoHoles option)
- Control location options
- Standard and optional valances available
- Limited lifetime warranty

SIZE CONSIDERATIONS

Minimum blind width	9" outside mount 9½" inside mount Exceptions: – 9" to 11 ¹⁵ / ₁₆ " are center tilt only – 12" to 16" standard or reverse standard controls only
Maximum single blind width	96"
Maximum width: Multiple blinds on one headrail	120"
Minimum blind height	10"
Maximum blind height	120"
Minimum depth required for inside mount	¾"

NOTE: For multiple blinds, there is a ¼" gap between blinds; for NoHoles there is a ½" gap between blinds.

VALANCES



SIGNATURE VALANCE
2½" Wood Shutter style,
standard, no charge



LEGACY VALANCE
2½" Wood Shutter style,
standard, no charge

COLORS

STAINS

Cherry WoodS014
Golden OakS030
Honey MapleS013
NaturalS007
PeruS688

PAINTED

BoneS024
Designer White.S055
Dover White.S683
SnowflakeS603
Swiss Coffee.S692

Note: Color of wood may vary slightly due to the natural characteristics of wood. See page 5 for more information.

CLOTH TAPES

1½" CLOTH TAPES

Beige	2011	Moss	2500
Black	2033	Navy	2369
Chocolate	2353	Taupe.	2659
Cocoa	2297	Toffee.	2296
Duck White	2136	Wheat	2710
Forest.	2234	White.	2005
Light Beige	2137	White Smoke.	2617
Maroon	2360		

OPTIONS

NO CHARGE OPTIONS:

- Bay and Corner Windows No Charge
- Cord tilt standard No Charge
- Cut-outs No Charge
- Hold-down brackets (upon request). No Charge
- Projection brackets. No Charge
- Shims (standard) No Charge

CORNICES

- See Cornice and Valance price list for product specifications.

VALANCES

- Valance descriptions. see pages 9 & 32
- Valance returns standard with outside mounts No Charge
(Available upon request for inside mounts. For valance measuring instructions, see page 8.)

SURCHARGE OPTIONS:

- AutoMate® see page 36
- Multiple Blinds on One Headrail:
Two or three blinds to left of heavy line \$32
Standard to right of heavy line No Charge

NOTE: Slat alignment cannot be guaranteed on side by side blinds, with the exception of multiple blinds on one headrail.

TRADITIONS® 2" COMPOSITE BLINDS THE CRYSTAL LAKE COLLECTION

FEATURES AND BENEFITS

- Genuine woodgrain appearance
- Moisture-proof slats won't warp
- Standard Valance and optional Legacy Valance available
- SureClose® headrail (1½" x 2¼") features lightblocking lip for tighter closure
- Color-coordinated ladders and cords
- Cord tilt standard, wand tilt available (up to 27 sq. ft.)
- Easy to clean
- Valance returns standard with outside mounts
- Decorative cloth tapes option available (not available with NoHoles option)
- Control location options
- NoHoles™ option available for maximum privacy
- Limited lifetime warranty

SIZE CONSIDERATIONS

Minimum blind width	9" outside mount 9½" inside mount Exceptions: – 9" to 11 ⁵ / ₁₆ " are center tilt only – 12" to 16" standard or reverse standard controls only
Maximum single blind width	96"
Maximum width: Multiple blinds on one headrail	120"
Minimum blind height	10"
Maximum blind height	120"
Minimum depth required for inside mount	¾"

NOTE: For multiple blinds, there is a ¼" gap between blinds; for NoHoles there is a ½" gap between blinds.

VALANCES



STANDARD VALANCE
2" Composite, standard no charge



LEGACY VALANCE
2" Composite, surcharge option

COLORS – WOODGRAINS

Dark Cherry	2316	Natural	2007
Golden Oak	2030	Peru	2688
Honey Maple	2013	Tuscany	2578
Light Oak	2010	Walnut	2012
Cherry Wood	2014		

CLOTH TAPES

1½" CLOTH TAPES		1" CLOTH TAPES	
Beige	2011	Black	1033
Black	2033	Cocoa	1297
Chocolate	2353	Duck White	1136
Cocoa	2297	Natural	1864
Duck White	2136	White Smoke	1617
Forest	2234		
Light Beige	2137		
Maroon	2360		
Moss	2500		
Navy	2369		
Taupe	2659		
Toffee	2296		
Wheat	2710		
White	2005		
White Smoke	2617		

OPTIONS

NO CHARGE OPTIONS:

- Bay and Corner Windows No Charge
- Cord tilt standard; wand tilt optional (up to 27 ft) No Charge
- Cut-outs No Charge
- Hold-down brackets (upon request) No Charge
- Projection brackets No Charge
- Shims No Charge

CORNICES

- See Cornice and Valance price list for product specifications.

VALANCES

- Valance descriptions see pages 9 & 32
- Valance returns standard with outside mounts No Charge (Available upon request for inside mounts. For valance measuring instructions, see page 8.)

SURCHARGE OPTIONS:

- AutoMate® see page 36
- Multiple Blinds on One Headrail:
Two or three blinds to left of heavy line \$32
Standard to right of heavy line No Charge

NOTE: Slat alignment cannot be guaranteed on side by side blinds, with the exception of multiple blinds on one headrail.

TRADITIONS® 2" COMPOSITE BLINDS THE CRYSTAL LAKE COLLECTION

FEATURES AND BENEFITS

- Moisture-proof slats won't warp
- Standard Valance and optional Legacy Valance available
- Color-coordinated ladders and cords
- Cord tilt standard, wand tilt available (up to 27 sq. ft.)
- SureClose® headrail (1½" x 2¼") features lightblocking lip for tighter closure
- Easy to clean
- Valance returns standard with outside mounts
- Decorative cloth tapes option available (not available with NoHoles™ option)
- Control location options
- NoHoles option available for maximum privacy
- Limited lifetime warranty

SIZE CONSIDERATIONS

Minimum blind width	9" outside mount 9½" inside mount Exceptions: – 9" to 11 ¹⁵ / ₁₆ " are center tilt only – 12" to 16" standard or reverse standard controls only
Maximum single blind width	96"
Maximum width: Multiple blinds on one headrail	120"
Minimum blind height	10"
Maximum blind height	120"
Minimum depth required for inside mount	¾"

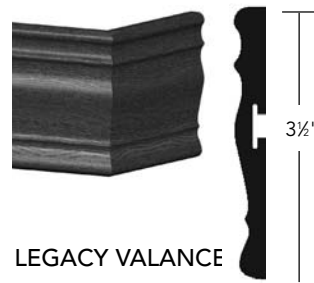
NOTE: For multiple blinds, there is a ¼" gap between blinds; for NoHoles there is a ½" gap between blinds.

VALANCES



STANDARD VALANCE

2" Composite, no standard charge



LEGACY VALANCE

2" Composite, surcharge option

COLORS – SOLIDS

Alabaster 2112	Snowflake 2603
Antique White 2026	Swiss Coffee 2692
Designer White 2055	

CLOTH TAPES

1½" CLOTH TAPES	1" CLOTH TAPES
Beige 2011	Black 1033
Black 2033	Cocoa 1297
Chocolate 2353	Duck White 1136
Cocoa 2297	Natural 1864
Duck White 2136	White Smoke 1617
Forest 2234	
Light Beige 2137	
Maroon 2360	
Moss 2500	
Navy 2369	
Taupe 2659	
Toffee 2296	
Wheat 2710	
White 2005	
White Smoke 2617	

OPTIONS

NO CHARGE OPTIONS:

- Bay and Corner Windows No Charge
- Cord tilt standard; wand tilt optional (up to 27 ft) No Charge
- Cut-outs No Charge
- Hold-down brackets (upon request) No Charge
- Projection brackets No Charge
- Shims No Charge

CORNICES

- See Cornice and Valance price list for product specifications.

VALANCES

- Valance descriptions see pages 9 & 32
- Valance returns standard with outside mounts No Charge (Available upon request for inside mounts. For valance measuring instructions, see page 8.)

SURCHARGE OPTIONS:

- AutoMate® see page 36
- Multiple Blinds on One Headrail:
 - Two or three blinds to left of heavy line \$32
 - Standard to right of heavy line No Charge

NOTE: Slat alignment cannot be guaranteed on side by side blinds, with the exception of multiple blinds on one headrail.

LAKE FOREST® 2" FAUX WOOD BLINDS

FEATURES AND BENEFITS

- Looks like wood, priced much lower
- Moisture-proof slats won't warp
- Standard Eloquence valance
- Color-coordinated ladders and cords
- Cord tilt only
- SureClose® headrail (1½" x 2¼") features lightblocking lip for tighter closure
- Easy to clean
- Valance returns standard with outside mounts
- Control location options (same side not available)
- NoHoles™ option available for maximum privacy.
- Limited lifetime warranty

SIZE CONSIDERATIONS

Minimum blind width	9" outside mount 9½" inside mount Exceptions: – 9" to 11 ¹⁵ / ₁₆ " are center tilt only
Maximum single blind width	78"
Maximum width: Multiple blinds on one headrail	120"
Minimum blind height	10"
Maximum blind height	120"
Minimum depth required for inside mount	¾"

NOTE: For multiple blinds, there is a ¼" gap between blinds; for NoHoles there is a ½" gap between blinds.

VALANCE



ELOQUENCE VALANCE
2" Faux Wood, standard,
no charge

COLORS

Buttermilk	5078	Natural	5007
Cherry	5655	Nutmeg	5264
Coconut	5630	White	5035
Milky Way	5058		

OPTIONS

NO CHARGE OPTIONS:

- Bay and Corner Windows No Charge
- Cord tilt standard No Charge

Note: Cord Tilt is standard on Lake Forest faux wood blinds, wand tilt is not available

- Cut-outs No Charge
- Hold-down brackets (upon request) No Charge
- Projection brackets No Charge
- Shims No Charge

CORNICES

- See Cornice and Valance price list for product specifications.

VALANCES

- Valance descriptions see pages 9 & 32
- Valance returns standard with outside mounts No Charge (Available upon request for inside mounts. For valance measuring instructions, see page 8.)

SURCHARGE OPTIONS:

- Multiple Blinds on One Headrail:
 - Two or three blinds to left of heavy line \$32
 - Standard to right of heavy line No Charge

NOTE: Slat alignment cannot be guaranteed on side by side blinds, with the exception of multiple blinds on one headrail.

LAKE FOREST® 2½" FAUX WOOD BLINDS

FEATURES AND BENEFITS

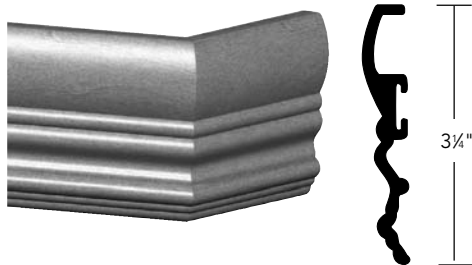
- Moisture-proof slats won't warp
- Standard Eloquence valance
- Color-coordinated ladders and cords
- Cord tilt only
- SureClose® headrail (1⅝" x 2¼") features lightblocking lip for tighter closure
- Easy to clean
- Valance returns standard with outside mounts
- Control location options (same side not available)
- Limited lifetime warranty

SIZE CONSIDERATIONS

Minimum blind width	9" outside mount 9½" inside mount Exceptions: – 9" to 11⅝" are center tilt only
Maximum single blind width	78"
Maximum width: Multiple blinds on one headrail	120"
Minimum blind height	10"
Maximum blind height	120"
Minimum depth required for inside mount	¾"

NOTE: For multiple blinds, there is a ¼" gap between blinds; for NoHoles there is a ½" gap between blinds.

VALANCES



ELOQUENCE VALANCE
2½" Faux Wood,
standard, no charge

COLORS

Coconut7630 White7035
Milky Way7058

OPTIONS

NO CHARGE OPTIONS:

- Bay and Corner Windows No Charge
- Cord tilt standard No Charge

Note: Cord Tilt is standard on Lake Forest faux wood blinds, wand tilt is not available

- Cut-outs No Charge
- Hold-down brackets (upon request) No Charge
- Projection brackets No Charge
- Shims No Charge

CORNICES

- See Cornice and Valance price list for product specifications.

VALANCES

- Valance descriptions see pages 9 & 32
- Valance returns standard with outside mounts No Charge (Available upon request for inside mounts. For valance measuring instructions, see page 8.)

SURCHARGE OPTIONS:

- Multiple Blinds on One Headrail:
Two or three blinds to left of heavy line \$32
Standard to right of heavy line No Charge

NOTE: Slat alignment cannot be guaranteed on side by side blinds, with the exception of multiple blinds on one headrail.

SPECIALTY APPLICATIONS • OPTIONS

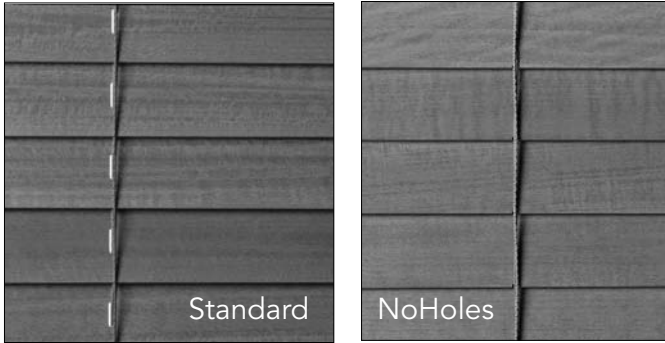
BLIND OPTIONS	TRADITIONS® 1" WOOD	TRADITIONS SHUTTER STYLE 2½"	TRADITIONS 2" WOOD ALL COLORS & TYPES	TRADITIONS 2" COMPOSITE	LAKE FOREST® 2" & 2½" FAUX WOOD	DETAILS
Control Locations:						
A. Tilt Left, Lift Right	✓	✓	✓	✓	✓	No charge.
B. Tilt Right, Lift Left	✓	✓	✓	✓	✓	
C. Both Controls Right	✓	✓	✓	✓	N/A	
D. Both Controls Left	✓	✓	✓	✓	N/A	
Cord Tilt	N/A	Std	Std	✓	✓	Standard cord tilt control on 2" and 2½" blinds.
Wand Tilt	Std	N/A	✓	✓	N/A	Not available on 2" Bamboo Blinds; 27 sq.ft. max on composite
Ring Pull	✓	✓	✓	✓	✓	No charge.
Ring Tilt	✓	N/A	✓	✓	N/A	No charge. Not available on Bamboo
Cordless Lift System	N/A	N/A	✓	N/A	N/A	Single blind: \$75, Multiple blinds on one headrail: \$150, Wand tilt standard, cord tilt optional (2" Wood and Sandblast only)
Projection Brackets (2¾" & 4¾")	✓	✓	✓	✓	✓	No charge.
⅜" Shims	✓	Std	✓	✓	✓	No charge. Standard with 2½" Lake Forest faux wood.
Valances	✓	✓	✓	✓	✓	See pages 8 & 32 for valance availability.
NoHoles™	N/A	✓	✓	✓	✓	See price grids. (Not available on 2½" Lake Forest)
Cloth Tapes	N/A	✓	✓	✓	N/A	See price grids. (Not available with NoHoles Option)
Two or More Blinds on One Headrail	✓	✓	✓	✓	✓	Surcharge based on width and length. Refer to price chart for details. If left of heavy line add \$32 for two or three blinds on one headrail. No charge for two or three blinds on one headrail if right of heavy line.
Hold down brackets	✓	✓	✓	✓	✓	No Charge.
AutoMate®	N/A	✓	✓	✓	N/A	Not available with Cordless Lift System.
Trapezoid Bottomrail	N/A	✓	✓	✓	N/A	Not available on 2" Bamboo.
Specialty Applications:						
Bay Window Blinds	✓	✓	✓	✓	✓	No Charge. See page 35.
Corner Blinds	✓	✓	✓	✓	✓	No Charge. See page 34.
Cut-Outs	✓	✓	✓	✓	✓	3"-5" maximum cut in depending on the rout hole location (only within 1" of first rout hole, no charge). See page 33.
Sky Pole*						
Extends to 6½ ft.	✓	✓	✓	✓	✓	Only available with ring tilt/ring pull; add \$17.
Extends to 9½ ft	✓	✓	✓	✓	✓	Only available with ring tilt/ring pull; add \$29.

N/A – Not Available ✓ – Available *Not available with cordless lift system

NOHOLES™ PRIVACY OPTION • SLAT FEATURES

NOHOLES PRIVACY OPTION

When it comes to privacy and light control, no other blind can match the performance of the NoHoles privacy option. Available on all 2" Wood, 2½" Wood Shutter Style, 2" Composite, and 2" Faux Wood blinds. Not available with optional cloth tapes.



THE OPTIMUM IN PRIVACY AND LIGHT CONTROL.

The small round holes found on blinds can allow light to leak through. These holes can also disrupt the simple linear look of the blind.

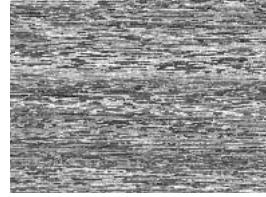
The exclusive patented design of Graber NoHoles eliminates round holes, providing superior privacy and light control.

THE EASIEST TO CLEAN.

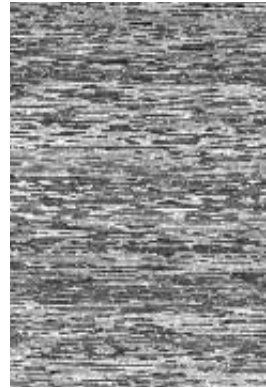
Because the slat surface has no cord interruptions, cleaning is no hassle. Simply slide NoHoles slats out and wipe clean or keep in place and vacuum using a soft brush attachment.



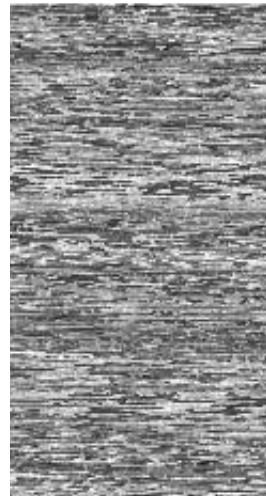
SLAT SIZE COMPARISON



1" Slats Available On:
Traditions Wood



2" Slats Available On:
Traditions Wood
Traditions Composite
Faux Wood



2½" Slats Available On:
Traditions Wood Shutter Style
Lake Forest Faux Wood

CORDLESS LIFT SYSTEM

Cordless wood blinds offer a safe alternative for homes with children and pets. The standard wand tilt eliminates all dangling cords.

To lower blind simply pull down using the handgrips on the bottomrail. To raise the blind, simply guide the blind into the desired location by gently lifting the bottomrail.



OPTIONS • VALANCE PRICING



STANDARD VALANCE

The clean simple profile of this valance enhances the appearance of your blinds. Available on 2" Bamboo, 2" Composite blinds as standard, no charge.



3½" LEGACY VALANCE

An upscale design that resembles crown molding, the Legacy valance complements your classic décor. Available on 2" Wood blinds, 2" Sandblast wood and 2" Composite blinds as a surcharge option, and on 2" Ash Woodtones and 2½" Wood Shutter Style blinds as standard, no charge.



2½" SIGNATURE VALANCE

Simple, elegant design adds the perfect finishing touch. Available on 1" and 2" Wood as standard, no charge, and 2½" Wood Shutter Style blinds as optional, no charge.



ELOQUENCE VALANCE

Tailored appearance complements your classic décor. Available on Faux Wood blinds at no charge.

VALANCE SIZE LIMITS

Slat Size/Style	Inside Mount	Outside Mount
1", 2", 2½" Wood	94" FBW	92½" FBW
2" Composite, 2" & 2½" Faux Wood	106⅝" FBW	105⅜" FBW

FBW = Finished blind width

Note: Continuous valances wider than sizes shown above will be two or more sections spliced together. No maximum width for spliced valances.

PRICING FOR REPLACEMENT WOOD, COMPOSITE AND FAUX WOOD VALANCES

Blind Width →	18"	23"	31"	36"	42"	48"	54"	60"	66"	72"	78"	84"	90"	96"	Add'l 10
2" Standard Bamboo	\$18	21	26	29	33	36	37	41	44	47	50	54	56	59	6
Signature Wood	17	20	24	27	31	34	36	39	42	46	49	52	54	57	6
Legacy Wood	20	23	27	31	34	37	41	42	46	49	52	56	57	60	6
Standard Composite	16	18	21	24	27	30	32	35	38	41	43	47	50	52	5
Legacy Composite	19	22	27	31	34	36	40	41	45	48	51	55	56	59	6
Eloquence Lake Forest	18	21	26	30	32	35	39	40	43	46	50	52	54	57	6

Returns must be requested at time of order for Replacement Valances.

OPTIONS

MULTIPLE BLINDS ON ONE HEADRAIL

Two or more blinds can be installed on a single headrail to provide a practical treatment for larger windows or sliding patio doors.

OPTIONS:

Standard controls:

- Two on one headrail
 - Left panel (tilt and lift left)
 - Right panel (tilt and lift right)
- Three on one headrail
 - Left panel (tilt and lift left)
 - Right panel (tilt and lift right)
 - Center panel (tilt left/lift right)

NOTE: 2" & 2½" Lake Forest™ are standard or reverse controls only.

Cordless Lift System:

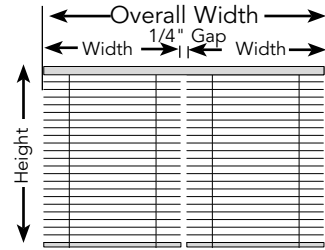
- Two on one headrail
 - Left panel (tilt left)
 - Right panel (tilt right)
- Three on one headrail
 - Left panel (tilt left)
 - Right panel (tilt right)
 - Center panel (tilt left)

MEASURING:

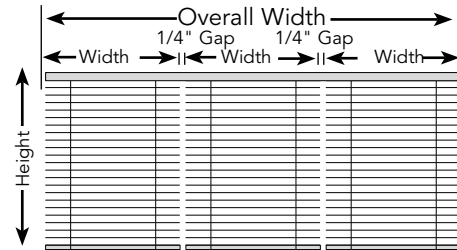
1. Measure overall width of the area to be covered. If space permits, an overlap of 1½" per side is recommended for outside mounts.
2. Measure the width of the area each blind is to cover. Measure and specify the left blind first, continuing to the right. Allow a minimum of ¼" between blinds for operating clearance (½" for NoHoles™).
3. Total width of all blinds, plus clearance(s) must equal overall width.
4. Measure height as follows:
 - a. For windows, use standard inside or outside measuring procedures.
 - b. For patio doors, measure height within ¾" of floor, either from ceiling or a point at least 6½" above the door frame. Check slat count tables on pages 37-39 if blind is to completely clear the doorway.

ORDERING:

1. Indicate quantity of blinds that are to be mounted on one headrail.
2. Specify total width of headrail.
3. Indicate each panel width separately, specify left blind first, continuing to the right.
4. Specify control positions, if other than standard.
5. Add applicable surcharge.



Two Blinds on one Headrail

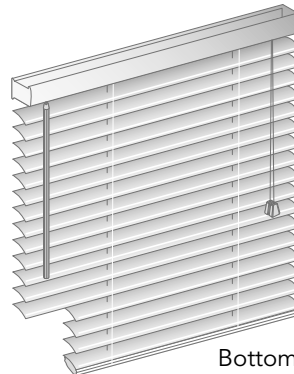


Three Blinds on one Headrail

CUT-OUT BLINDS

Bottom corner – No charge

Maximum cut-out is 1" before rout hole (corner and side cut-outs only).



Bottom corner cut-out shown

MEASURING INFORMATION FOR CORNER WINDOW BLINDS

CORNER AND BAY WINDOWS

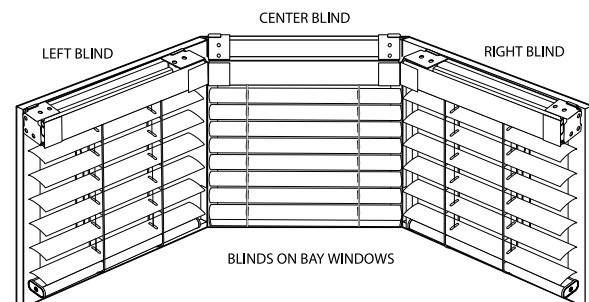
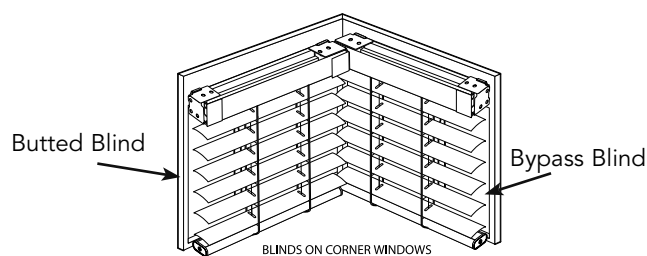
- Made as individual shades to fit in bay or corner windows
- Each blind is on an individual headrail and have its own control
- Indicate each blind with bypass or butt
Bypass is the blind mounted into the corner
Butt is the blind butted up to the other blind
Must provide blind location (left and right blind)
- Control locations can be on the right or left side of each blind; placing controls opposite the corner is recommended
- Depending on the angle, some corner blinds cannot be raised to the same height
- Horizontal slat alignment between blinds cannot be guaranteed
- Manufacturer will take appropriate deductions for proper fit
- No additional charge
- Valances will be mitered in the corner for finished look
- **Cornices are not available on bay or corner windows**

MEASURING GUIDE

CORNER WINDOW

Measure:

Width of each window from corner to the point you would like to cover. If not a 90 degree corner, must indicate angle measurement.



MEASURING INFORMATION FOR BAY WINDOW BLINDS

MEASURING GUIDES

Three-sided Bay Window

Measure:

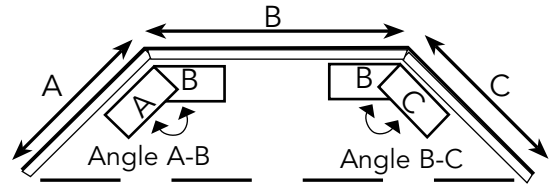
A & C: Width of side windows from the corners to the point you would like the blind to cover.

B: Width of the center window from corner to corner.

Angle A-B: Angle between windows (A) and (B).

Angle B-C: Angle between windows (B) and (C).

Measure bay angle using protractor or angle finder. Or use two business cards in bay corner as illustrated and fax to customer service.



Four-sided Bay Window

Measure:

A & D: Width of side windows from the corners to the point you would like the blind to cover.

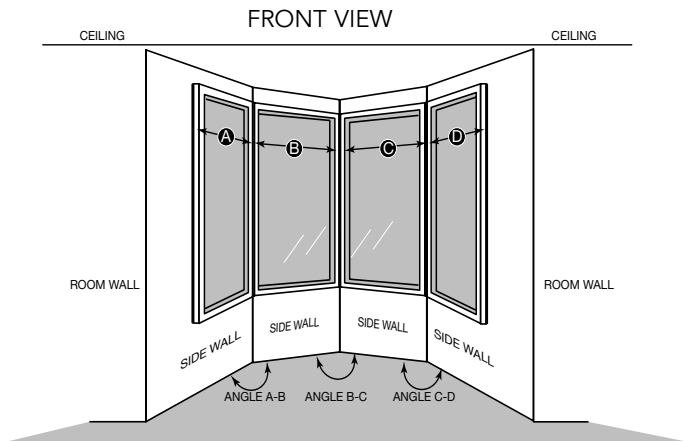
B & C: Width of each window from corner to corner.

Angle A-B: Angle between windows (A) and (B).

Angle B-C: Angle between windows (B) and (C).

Angle C-D: Angle between windows (C) and (D).

Measure bay angle using protractor or angle finder. Or use two business cards in bay corner as illustrated and fax to customer service.



Five-sided Bay Window

Measure:

A & E: Width of side windows from the corners to the point you would like the blind to cover.

B, C & D: Width of each center window from corner to corner.

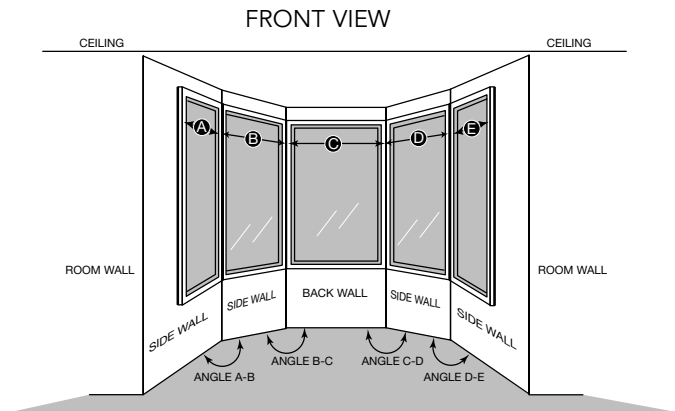
Angle A-B: Angle between windows (A) and (B).

Angle B-C: Angle between windows (B) and (C).

Angle C-D: Angle between windows (C) and (D).

Angle D-E: Angle between windows (D) and (E).

Measure bay angle using protractor or angle finder. Or use two business cards in bay corner as illustrated and fax to customer service.



AUTOMATE® REMOTE CONTROL BLIND OPTION

- Available on 2" and 2½" shutter style wood blinds, and 2" composite.
- Will tilt blinds only–will not raise and lower blind.

SIZE SPECIFICATIONS

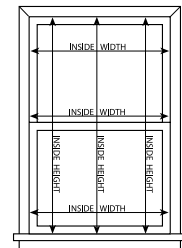
Min. Width:	19 inches exact
Max. Width:	96 inches
Max. Height:	120 inches
Max. Size	6,048 sq. in. - 2" Slat
	4,608 sq. in. - 2½" Shutter Slat

Example:

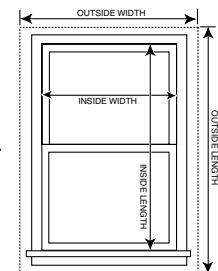
72" wide x 96" high = 6,912 sq. in. (over)
 18" wide x 62" high = 1,116 sq. in. (under min. width)
 67" wide x 84" high = 5,628 sq. in. (ok)
 Blinds up to 48" wide - maximum length 120"
 Blinds over 48" wide - maximum length 84"

TO USE THIS SIZE CHART:

1. Determine your blind width and height dimensions.
2. Make sure dimensions are within minimum and maximum size specifications listed.
3. Multiply width times height. (round each dimension up to nearest inch for easy calculation) to obtain blind size in square inches.
4. Make sure your calculated blind sizes do not exceed the maximum size specifications listed.
5. Multiple blinds on one headrail are allowed if total size is under 6,048 square inches. All blinds will operate together with one motor.



Inside Mount



Outside Mount

OPTION PRICING & ACCESSORIES

MOTORS – RADIO FREQUENCY OPTIONS

Add surcharges listed below to blind price.

Must order 12 Volt Motor, one Power Source Option (A) and at least one Control Option (B).

Motor	
Description	Price
12 Volt Motor, Radio Frequency Controlled	\$191

A. Power Source: Choose one Battery Wand or one Transformer per motor

12 Volt Battery Wand–Reloadable Wand – Empty requires 8 AA lithium batteries (not included)	\$64
12 Volt Battery Wand–Reloadable Wand – Includes an 8 pack of AA lithium batteries	\$96
12 Volt DC Plug-in Transformer with 25 ft lead (White)	\$85

NOTE: All battery wands include a removable 10" lead wire and mounting clips. Cutouts and hold downs not available with motorization. Motorization components, excluding battery wands, have a 5 year limited warranty.

See page 23 in the Graber Vinyl price list for descriptions of the motorization controls.

B. Controller: Choose one or more Remote, Wall Switch or timer per order; Controller wire-free and Battery included

Radio Control Remotes	
Telis Single Channel RTS Remote: White Controls one or more shades functioning on the same channel	\$80
Telis Five Channel RTS Remote: White Use to control multiple shades independently, in a group or in multiple groups	\$103

Radio Control Wall Switches	
Decoflex Single Channel RTS Wall Switch Choose White or Ivory. Controls one or more shades functioning on the same channel	\$198
Decoflex Five Channel RTS Wall Switch Choose White or Ivory. Use to control multiple shades independently, in a group or in multiple groups	\$226

Radio Control Timer	
Chronis Comfort RTS Timer. Operates shades at predetermined times	\$324

SLAT COUNT TABLE

TRADITIONS™ 1" AND 2" WOOD BLINDS														
NUMBER OF SLATS	Traditions 1" Blinds		Traditions 2" Blinds & NoHoles™		NUMBER OF SLATS	Traditions 1" Blinds		Traditions 2" Blinds & NoHoles™		NUMBER OF SLATS	Traditions 1" Blinds		Traditions 2" Blinds & NoHoles™	
	Finished Blind Height	Finished Stack Height	Finished Blind Height	Finished Stack Height		Finished Blind Height	Finished Stack Height	Finished Blind Height	Finished Stack Height		Finished Blind Height	Finished Stack Height	Finished Blind Height	Finished Stack Height
4	5 ⁵ / ₁₆ "	3 ¹ / ₁₆ "	10 ³ / ₁₆ "	4 ¹ / ₁₆ "	50	44 ¹ / ₄ "	9 ⁹ / ₁₆ "	90"	11 ¹ / ₁₆ "	96	83 ³ / ₈ "			
5	6 ³ / ₁₆ "		12 ¹ / ₁₆ "		51	45 ⁵ / ₁₆ "		91 ³ / ₄ "		97	84"			
6	7"		13 ¹ / ₁₆ "		52	45 ¹⁵ / ₁₆ "		93 ¹ / ₂ "		98	85 ¹ / ₁₆ "			
7	7 ⁷ / ₁₆ "		15 ¹ / ₁₆ "		53	46 ³ / ₁₆ "		95 ¹ / ₂ "		99	84 ¹³ / ₁₆ "			
8	8 ¹ / ₁₆ "		17 ¹ / ₁₆ "		54	47 ⁷ / ₁₆ "		96 ¹⁵ / ₁₆ "		100	86 ¹ / ₂ "	15 ⁵ / ₁₆ "		
9	9 ¹ / ₂ "		19"		55	48 ⁶ / ₁₆ "		98 ¹ / ₁₆ "		101	87 ³ / ₈ "			
10	10 ³ / ₁₆ "	3 ¹ / ₁₆ "	20 ³ / ₁₆ "	5 ¹ / ₁₆ "	56	49 ⁵ / ₁₆ "		100 ¹ / ₁₆ "		102	88 ³ / ₁₆ "			
11	11 ¹ / ₄ "		22 ¹ / ₂ "		57	50 ³ / ₁₆ "		102 ³ / ₁₆ "		103	89 ³ / ₁₆ "			
12	12 ¹ / ₁₆ "		24 ¹ / ₁₆ "		58	51"		103 ⁷ / ₁₆ "		104	89 ¹⁵ / ₁₆ "			
13	12 ¹⁵ / ₁₆ "		25 ¹⁵ / ₁₆ "		59	51 ¹³ / ₁₆ "		105 ⁵ / ₁₆ "		105	90 ³ / ₄ "			
14	13 ³ / ₄ "		27 ¹ / ₁₆ "		60	52 ¹ / ₁₆ "	11"	107 ³ / ₁₆ "	13"	106	91 ³ / ₈ "			
15	14 ⁵ / ₈ "		29 ⁷ / ₁₆ "		61	53 ³ / ₁₆ "		109 ¹ / ₁₆ "		107	92 ⁷ / ₁₆ "			
16	15 ¹ / ₁₆ "		31 ¹ / ₁₆ "		62	54 ⁷ / ₁₆ "		110 ¹ / ₁₆ "		108	93 ⁵ / ₁₆ "			
17	16 ⁵ / ₁₆ "		32 ⁷ / ₁₆ "		63	55 ¹ / ₄ "		112 ⁵ / ₁₆ "		109	94 ¹ / ₈ "			
18	17 ³ / ₁₆ "		34 ³ / ₁₆ "		64	56 ³ / ₁₆ "		114 ³ / ₁₆ "		110	95"	16 ⁷ / ₁₆ "		
19	18"		36 ³ / ₁₆ "		65	56 ¹⁵ / ₁₆ "		116"		111	95 ¹³ / ₁₆ "			
20	18 ³ / ₁₆ "	5 ¹ / ₁₆ "	38 ³ / ₁₆ "	6 ³ / ₁₆ "	66	57 ³ / ₄ "		117 ³ / ₄ "		112	96 ¹ / ₁₆ "			
21	19 ¹ / ₁₆ "		39 ¹³ / ₁₆ "		67	58 ⁷ / ₁₆ "		119 ¹ / ₂ "		113	97 ¹ / ₂ "			
22	20 ¹ / ₂ "		41 ¹ / ₂ "		68	59 ⁵ / ₁₆ "		120"	14 ⁵ / ₁₆ "	114	98 ³ / ₈ "			
23	21 ³ / ₈ "		43 ¹ / ₄ "		69	60 ³ / ₁₆ "				115	99 ³ / ₁₆ "			
24	22 ¹ / ₄ "		45"		70	61 ¹ / ₈ "	12 ¹ / ₁₆ "			116	100 ¹ / ₁₆ "			
25	23 ³ / ₁₆ "		46 ³ / ₁₆ "		71	62"				117	100 ¹⁵ / ₁₆ "			
26	23 ¹⁵ / ₁₆ "		48"		72	62 ¹³ / ₁₆ "				118	101 ³ / ₁₆ "			
27	24 ³ / ₄ "		50 ³ / ₁₆ "		73	63 ¹ / ₁₆ "				119	102 ⁷ / ₁₆ "			
28	25 ⁵ / ₈ "		51 ¹⁵ / ₁₆ "		74	64 ¹ / ₂ "				120	103 ¹ / ₁₆ "	18 ⁷ / ₁₆ "		
29	26 ³ / ₁₆ "		53 ³ / ₈ "		75	65 ⁷ / ₁₆ "				121	104 ³ / ₁₆ "			
30	27 ⁵ / ₁₆ "	6 ³ / ₁₆ "	55 ³ / ₁₆ "	8 ¹ / ₄ "	76	66 ¹ / ₄ "				122	105 ⁵ / ₁₆ "			
31	28 ³ / ₁₆ "		57 ¹ / ₈ "		77	67 ³ / ₁₆ "				123	106"			
32	29"		58 ¹ / ₁₆ "		78	67 ¹⁵ / ₁₆ "				124	106 ¹³ / ₁₆ "			
33	29 ⁷ / ₁₆ "		60 ³ / ₁₆ "		79	68 ³ / ₁₆ "				125	107 ¹ / ₁₆ "			
34	30 ¹ / ₁₆ "		62 ⁵ / ₁₆ "		80	69 ⁷ / ₁₆ "	12 ¹⁵ / ₁₆ "			126	108 ¹ / ₂ "			
35	31 ¹ / ₂ "		64 ³ / ₁₆ "		81	70 ³ / ₁₆ "				127	109 ³ / ₁₆ "			
36	32 ³ / ₈ "		65 ³ / ₄ "		82	71 ⁵ / ₁₆ "				128	110 ³ / ₁₆ "			
37	33 ¹ / ₄ "		67 ¹ / ₂ "		83	72 ⁷ / ₁₆ "				129	111 ¹ / ₁₆ "			
38	34 ³ / ₁₆ "		69 ¹ / ₄ "		84	73"				130	111 ¹⁵ / ₁₆ "	19 ⁵ / ₁₆ "		
39	34 ¹⁵ / ₁₆ "		71"		85	73 ¹³ / ₁₆ "				131	112 ³ / ₄ "			
40	35 ³ / ₄ "	8 ¹ / ₁₆ "	72 ¹ / ₁₆ "	9 ¹ / ₁₆ "	86	74 ¹ / ₁₆ "				132	113 ⁵ / ₁₆ "			
41	36 ⁵ / ₈ "		74 ³ / ₁₆ "		87	75 ¹ / ₂ "				133	114 ⁷ / ₁₆ "			
42	37 ¹ / ₁₆ "		76 ³ / ₁₆ "		88	76 ³ / ₈ "				134	115 ⁵ / ₁₆ "			
43	38 ³ / ₁₆ "		77 ¹⁵ / ₁₆ "		89	77 ³ / ₁₆ "				135	116 ³ / ₈ "			
44	39 ⁵ / ₁₆ "		79 ³ / ₁₆ "		90	78 ³ / ₁₆ "	14 ¹ / ₄ "			136	117"			
45	40"		81 ³ / ₁₆ "		91	78 ¹⁵ / ₁₆ "				137	117 ¹³ / ₁₆ "			
46	40 ⁷ / ₁₆ "		83 ¹ / ₈ "		92	79 ⁷ / ₁₆ "				138	118 ¹ / ₁₆ "			
47	41 ¹ / ₁₆ "		84 ¹³ / ₁₆ "		93	80 ⁵ / ₁₆ "				139	119 ¹ / ₂ "			
48	42 ¹ / ₂ "		86 ³ / ₁₆ "		94	81 ³ / ₁₆ "				140	120 ³ / ₁₆ "	20 ¹ / ₂ "		
49	43 ³ / ₁₆ "		88 ³ / ₁₆ "		95	82 ³ / ₁₆ "								

NOTE: Finished height includes headrail and bottomrail. Call Customer Service for additional blind heights.

SLAT COUNT TABLE

TRADITIONS™ SHUTTER STYLE 2½" WOOD BLINDS

Number of slats	Traditions Shutter Style 2½" Wood Blinds		Number of slats	Traditions Shutter Style 2½" Wood Blinds		Number of slats	Traditions Shutter Style 2½" Wood Blinds	
	Finished Blind Height	Finished Stack Height		Finished Blind Height	Finished Stack Height		Finished Blind Height	Finished Stack Height
4	8 ⁵ / ₁₆	4 ¹ / ₄	23	49	8 ⁵ / ₁₆	41	87 ¹ / ₄	121 ¹ / ₁₆
5	10 ¹¹ / ₁₆	4 ¹ / ₂	24	51 ¹ / ₈	8 ¹³ / ₁₆	42	89 ³ / ₈	127 ⁷ / ₈
6	12 ¹³ / ₁₆	4 ³ / ₄	25	53 ¹ / ₄	9 ¹ / ₁₆	43	91 ¹ / ₂	13 ¹ / ₈
7	14 ¹⁵ / ₁₆	4 ¹⁵ / ₁₆	26	55 ³ / ₈	9 ¹ / ₄	44	93 ⁵ / ₈	13 ³ / ₈
8	17 ¹ / ₁₆	5 ³ / ₁₆	27	57 ¹ / ₂	9 ¹ / ₂	45	95 ³ / ₄	13 ⁹ / ₁₆
9	19 ³ / ₁₆	5 ⁷ / ₁₆	28	59 ⁵ / ₈	9 ³ / ₄	46	97 ⁷ / ₈	13 ¹³ / ₁₆
10	21 ⁵ / ₁₆	5 ⁵ / ₈	29	61 ³ / ₄	9 ¹⁵ / ₁₆	47	100	14 ¹ / ₁₆
11	23 ¹ / ₂	5 ⁷ / ₈	30	63 ⁷ / ₈	10 ³ / ₁₆	48	102 ¹ / ₈	14 ⁹ / ₁₆
12	25 ⁵ / ₈	6 ¹ / ₈	31	66	10 ⁷ / ₁₆	49	104 ¹ / ₄	14 ¹ / ₂
13	27 ³ / ₄	6 ⁵ / ₁₆	32	68 ¹ / ₈	10 ⁵ / ₈	50	106 ³ / ₈	14 ³ / ₄
14	29 ⁷ / ₈	6 ¹ / ₁₆	33	70 ¹ / ₄	10 ⁷ / ₈	51	108 ¹ / ₂	14 ¹⁵ / ₁₆
15	32	6 ³ / ₄	34	72 ³ / ₈	11 ¹ / ₁₆	52	110 ⁵ / ₈	15 ³ / ₁₆
16	34 ¹ / ₈	7	35	74 ¹ / ₂	11 ⁵ / ₁₆	53	112 ³ / ₄	15 ³ / ₈
17	36 ¹ / ₄	7 ¹ / ₄	36	76 ⁵ / ₈	11 ⁹ / ₁₆	54	114 ⁷ / ₈	15 ⁵ / ₈
18	38 ³ / ₈	7 ⁷ / ₁₆	37	78 ³ / ₄	11 ³ / ₄	55	117	15 ⁷ / ₈
19	40 ¹ / ₂	7 ¹¹ / ₁₆	38	80 ⁷ / ₈	12	56	119 ¹ / ₈	16 ¹ / ₁₆
20	42 ⁵ / ₈	7 ¹⁵ / ₁₆	39	83	12 ¹ / ₄	57	121 ¹ / ₄	16 ⁵ / ₁₆
21	44 ³ / ₄	8 ¹ / ₈	40	85 ¹ / ₈	12 ⁷ / ₁₆	58	123 ³ / ₈	16 ⁹ / ₁₆
22	46 ⁷ / ₈	8 ³ / ₈						

SLAT COUNT TABLE

TRADITIONS™ COMPOSITE AND LAKE FOREST™ FAUX WOOD BLINDS

NUMBER OF SLATS	Traditions Composite NoHoles 2" Blinds		Lake Forest, Lake Forest NoHoles™ 2" Blinds		Lake Forest 2½" Blinds		NUMBER OF SLATS	Traditions Composite NoHoles 2" Blinds		Lake Forest, Lake Forest NoHoles™ 2" Blinds		Lake Forest 2½" Blinds		NUMBER OF SLATS	Traditions Composite NoHoles 2" Blinds		Lake Forest, Lake Forest NoHoles™ 2" Blinds		Lake Forest 2½" Blinds	
	Finished Blind Height	Finished Stack Height	Finished Blind Height	Finished Stack Height	Finished Blind Height	Finished Stack Height		Finished Blind Height	Finished Stack Height	Finished Blind Height	Finished Stack Height	Finished Blind Height	Finished Stack Height		Finished Blind Height	Finished Stack Height	Finished Blind Height	Finished Stack Height	Finished Blind Height	Finished Stack Height
4	10⅞"	3⅞"	10⅜"	3½"	11⅛"	3½"	26	48⅞"		48½"		58¾"		48	86⅛"		86⅞"		105½"	
5	12⅜"		12⅞"		14⅞"		27	50⅞"		50⅞"		60⅞"		49	88⅞"		88⅞"		107⅞"	
6	13⅛"		13⅞"		16¼"		28	52"		51⅛"		63"		50	90⅞"	11½"	90"	11⅞"	109¼"	11⅞"
7	15⅛"		15⅞"		18⅞"		29	53¾"		53⅞"		65⅞"		51	91⅞"		91¾"		111⅞"	
8	17⅜"		17¼"		20½"		30	55½"	8⅞"	55⅞"	8¼"	67¼"	8¼"	52	93⅞"		93½"		114"	
9	19⅞"		19"		22⅞"		31	57¼"		57⅞"		69⅞"		53	95⅞"		95¼"		116⅞"	
10	20⅞"	5⅞"	20¾"	5⅞"	24¼"	5⅞"	32	59"		58⅞"		71½"		54	97⅞"		96⅛"		118¼"	
11	22⅞"		22½"		26⅞"		33	60⅛"		60⅞"		73⅞"		55	98⅛"		98⅛"		120⅞"	12¼"
12	24⅞"		24⅞"		29"		34	62⅞"		62⅞"		75¾"		56	100⅞"		100⅞"			
13	26⅞"		25⅞"		31⅞"		35	64⅞"	9⅞"	64⅞"		77⅞"		57	102¼"		102⅞"			
14	27⅛"		27⅞"		33¼"		36	65⅞"		65¾"		80"		58	104"		103⅞"			
15	29½"		29⅞"		35⅞"		37	67⅞"		67½"		82⅞"		59	105¾"		105⅞"			
16	31¼"		31⅞"		37½"		38	69⅞"		69¼"		84¼"		60	107⅞"	13⅞"	107⅞"	13"		
17	33"		32⅞"		39⅞"		39	71⅞"		71"		86⅞"		61	109⅞"		109⅞"			
18	34⅛"		34⅞"		41¼"		40	72⅞"	9⅞"	72⅞"	9⅞"	88½"	9⅞"	62	110⅞"		110⅞"			
19	36⅞"		36⅞"		43⅞"		41	74⅞"		74⅞"		90⅞"		63	112⅞"		112⅞"			
20	38⅞"	6¼"	38⅞"	6⅞"	46"	6⅞"	42	76⅞"		76⅞"		92¼"		64	114⅞"		114⅞"			
21	39⅛"		39⅞"		48⅞"		43	78"		77⅞"		94⅞"		65	116⅞"		116"			
22	41⅞"		41½"		50¼"		44	79¾"		79⅞"		97"		66	117⅞"		117¼"			
23	43⅞"		43¼"		52⅞"		45	81½"		81⅞"		99⅞"		67	119⅞"		119½"			
24	45⅞"		45"		54½"		46	83⅞"		83⅞"		101¼"		68	121⅞"	4⅞"	121⅞"	14⅞"		
25	46⅛"		46¾"		56⅞"		47	84⅞"		84⅞"		103⅞"								

NOTE: Finished height includes headrail and bottomrail. See Graber Representative for additional blind heights.

SLAT ROUT AND LADDER COUNT

TRADITIONS™ 1" WOOD BLINDS

Finished Blind Width	Slat End Rout	# of Ladders	# of Lifts	# of Center Brackets
9 to 13¾"	3¼"	2	2	0
13 ¹³ / ₁₆ to 20¾"	4"	2	2	0
20 ¹³ / ₁₆ to 35"	6"	2	2	0
35 ¹ / ₁₆ to 58"	6"	3	2	1 over 48" FBW
58 ¹ / ₁₆ to 81"	6"	4	4	2 over 78" FBW
81 ¹ / ₁₆ to 96"	6"	5	4	2

For Same Side Controls

13 ¹³ / ₁₆ to 20¾"	4¾"	As Above	As Above	As Above
20 ¹³ / ₁₆ to 96"	6"	As Above	As Above	As Above

Notes:

1. Maximum spacing between ladders is 23".
2. Standard control positions: Lift right/ Tilt left.
3. Maximum slat width is 96". Wider blinds must be multiple blinds.

TRADITIONS 2" WOOD BLINDS

Excludes Bamboo

For Standard or Reverse Controls

Finished Blind Width	Slat End Rout	# of Ladders	# of Lifts	# of Brackets
9 to 10" cord tilt only	2¾"	2	2	0
9 to 11 ¹⁵ / ₁₆ "	3"	2	2	0
12 to 24"	4"	2	2	0
24 ¹ / ₁₆ to 36"	6"	2	2	0
36 ¹ / ₁₆ to 60"	6"	3	2	1 over 48" FBW
60 ¹ / ₁₆ to 84"	6"	4	4	2 over 72" FBW
84 ¹ / ₁₆ to 96"	6"	5	4	2

For Same Side Controls

16 ¹ / ₁₆ to 36"	6"	2	2	0
36 ¹ / ₁₆ to 60"	6"	3	2	1 over 48" FBW
60 ¹ / ₁₆ to 84"	6"	4	4	2 over 72" FBW
84 ¹ / ₁₆ to 96"	6"	5	4	2

Notes:

1. Maximum spacing between ladders is 24".
2. Standard control positions: Lift right/ Tilt left.
3. Maximum slat width is 96". Wider blinds must be multiple blinds.

TRADITIONS 2" WOOD BLINDS NOHOLES™

Excludes Bamboo

For Standard or Reverse Controls

Finished Blind Width	Slat and Bottomrail End Rout	# of Ladders	# of Lifts	# of Center Brackets
9 to 10" cord tilt only	2¾"	2	2	0
9 to 11 ¹⁵ / ₁₆ "	3"	2	2	0
12 to 24"	4"	2	2	0
24 ¹ / ₁₆ to 36"	6"	2	2	0
36 ¹ / ₁₆ to 60"	6"	3	3	1 over 48" FBW
60 ¹ / ₁₆ to 84"	6"	4	4	2 over 72" FBW
84 ¹ / ₁₆ to 96"	6"	5	4	2

For Same Side Controls

20 to 36"	6"	2	2	0
36 ¹ / ₁₆ to 60"	6"	3	3	1 over 48" FBW
60 ¹ / ₁₆ to 84"	6"	4	4	2 over 72" FBW
84 ¹ / ₁₆ to 96"	6"	5	4	2

Notes:

1. Maximum spacing between ladders is 24".
2. Standard control positions: Lift right/ Tilt left.
3. Maximum slat width is 96". Wider blinds must be multiple blinds.

TRADITIONS 2" WOOD BLINDS BAMBOO

For Standard or Reverse Controls

Finished Blind Width	Slat End Rout	# of Ladders	# of Lifts	# of Center Brackets
9 to 10" cord tilt only	2¾"	2	2	0
9 to 11 ¹⁵ / ₁₆ "	3"	2	2	0
12 to 22"	4"	2	2	0
22 ¹ / ₁₆ to 38"	5"	3	2	1 over 48" FBW
38 ¹ / ₁₆ to 52"	5"	4	4	1
52 ¹ / ₁₆ to 66"	5"	5	3	2 over 72" FBW
66 ¹ / ₁₆ to 80"	5"	6	4	2
80 ¹ / ₁₆ to 94"	5"	7	4	2
94 ¹ / ₁₆ to 96"	5"	8	4	2

For Same Side Controls

16 ¹ / ₁₆ to 26"	6"	2	2	0
26 ¹ / ₁₆ to 40"	6"	3	2	0
40 ¹ / ₁₆ to 54"	6"	4	4	1 over 48" FBW
54 ¹ / ₁₆ to 68"	6"	5	3	1
68 ¹ / ₁₆ to 80"	6"	6	4	2 over 72" FBW
80 ¹ / ₁₆ to 94"	6"	7	4	2
94 ¹ / ₁₆ to 96"	6"	8	4	2

Notes:

1. Maximum spacing between ladders is 14".
2. Standard control positions: Lift right/ Tilt left.
3. Maximum slat width is 96". Wider blinds must be multiple blinds.

SLAT ROUT AND LADDER COUNT

TRADITIONS™ 2" WOOD BLINDS BAMBOO NOHOLES™

For Standard or Reverse Controls

Finished Blind Width	Slat End Rout	# of Ladders	# of Lifts	# of Center Brackets
9 to 10" cord tilt only	2 ³ / ₈ "	2	2	0
9 to 11 ¹ / ₁₆ "	3"	2	2	0
12 to 22"	4"	2	2	0
22 ¹ / ₁₆ to 38"	5"	3	3	0
38 ¹ / ₁₆ to 52"	5"	4	4	1 over 48" FBW
52 ¹ / ₁₆ to 66"	5"	5	4	1
66 ¹ / ₁₆ to 80"	5"	6	4	2 over 72" FBW
80 ¹ / ₁₆ to 94"	5"	7	4	2
94 ¹ / ₁₆ to 96"	5"	8	4	2

For Same Side Controls

16 ¹ / ₁₆ to 26"	6"	2	2	0
26 ¹ / ₁₆ to 40"	6"	3	3	0
40 ¹ / ₁₆ to 54"	6"	4	4	1 over 48" FBW
54 ¹ / ₁₆ to 68"	6"	5	4	1
68 ¹ / ₁₆ to 80"	6"	6	4	2 over 72" FBW
80 ¹ / ₁₆ to 94"	6"	7	4	2
94 ¹ / ₁₆ to 96"	6"	8	4	2

Notes:

1. Maximum spacing between ladders is 14".
2. Standard control positions: Lift right/ Tilt left.
3. Maximum slat width is 96". Wider blinds must be multiple blinds.

TRADITIONS 2½" WOOD SHUTTER STYLE

For Standard or Reverse Controls

Finished Blind Width	Slat End Rout	# of Ladders	# of Lifts	# of Center Brackets
9 to 10" cord tilt only	2 ³ / ₈ "	2	2	0
9 to 11 ¹ / ₁₆ "	3"	2	2	0
12 to 24"	4"	2	2	0
24 ¹ / ₁₆ to 36"	6"	2	2	0
36 ¹ / ₁₆ to 60"	6"	3	2	1 over 48" FBW
60 ¹ / ₁₆ to 84"	6"	4	4	2 over 72" FBW
84 ¹ / ₁₆ to 96"	6"	5	4	2

For Same Side Controls

16 ¹ / ₁₆ to 36"	6"	2	2	0
36 ¹ / ₁₆ to 60"	6"	3	2	1 over 48" FBW
60 ¹ / ₁₆ to 84"	6"	4	4	2 over 72" FBW
84 ¹ / ₁₆ to 96"	6"	5	4	2

Notes:

1. Maximum spacing between ladders is 24".
2. Standard control positions: Lift right/ Tilt left.
3. Maximum slat width is 96". Wider blinds must be multiple blinds.

TRADITIONS 2½" WOOD SHUTTER STYLE NOHOLES

For Standard or Reverse Controls

Finished Blind Width	Slat End Rout	# of Ladders	# of Lifts	# of Center Brackets
9 to 10" cord tilt only	2 ³ / ₈ "	2	2	0
9 to 11 ¹ / ₁₆ "	3"	2	2	0
12 to 24"	4"	2	2	0
24 ¹ / ₁₆ to 36"	6"	2	2	0
36 ¹ / ₁₆ to 60"	6"	3	3	1 over 48" FBW
60 ¹ / ₁₆ to 84"	6"	4	4	2 over 72" FBW
84 ¹ / ₁₆ to 96"	6"	5	4	2

For Same Side Controls

16 ¹ / ₁₆ to 36"	6"	2	2	0
36 ¹ / ₁₆ to 60"	6"	3	3	1 over 48" FBW
60 ¹ / ₁₆ to 84"	6"	4	4	2 over 72" FBW
84 ¹ / ₁₆ to 96"	6"	5	4	2

Notes:

1. Maximum spacing between ladders is 24".
2. Standard control positions: Lift right/ Tilt left.
3. Maximum slat width is 96". Wider blinds must be multiple blinds.

SLAT ROUT AND LADDER COUNT

TRADITIONS™ 2" COMPOSITE BLINDS NOHOLES™

For Standard or Reverse Controls

Finished Blind Width	Slat End Rout	# of Ladders	# of Lifts	# of Center Brackets
9 to 10" cord tilt only	2 $\frac{3}{8}$ "	2	2	0
9 to 11 $\frac{5}{16}$ "	3"	2	2	0
12 to 22"	4"	2	2	0
22 $\frac{1}{16}$ to 38"	5"	3	3	0
38 $\frac{1}{16}$ to 52"	5"	4	4	1 over 48" FBW
52 $\frac{1}{16}$ to 66"	5"	5	4	1
66 $\frac{1}{16}$ to 80"	5"	6	4	2 over 72" FBW
80 $\frac{1}{16}$ to 94"	5"	7	4	2
94 $\frac{1}{16}$ to 96"	5"	8	4	2

For Same Side Controls

16 $\frac{1}{16}$ to 26"	6"	2	2	0
26 $\frac{1}{16}$ to 40"	6"	3	3	0
40 $\frac{1}{16}$ to 54"	6"	4	4	1 over 48" FBW
54 $\frac{1}{16}$ to 68"	6"	5	4	1
68 $\frac{1}{16}$ to 80"	6"	6	4	2 over 72" FBW
80 $\frac{1}{16}$ to 94"	6"	7	4	2
94 $\frac{1}{16}$ to 96"	6"	8	4	2

Notes:

1. Maximum spacing between ladders is 14".
2. Standard control positions: Lift right/ Tilt left.
3. Maximum slat width is 96". Wider blinds must be multiple blinds.

TRADITIONS 2" COMPOSITE BLINDS

For Standard or Reverse Controls

Finished Blind Width	Slat End Rout	# of Ladders	# of Lifts	# of Center Brackets
9 to 10" cord tilt only	2 $\frac{3}{8}$ "	2	2	0
9 to 11 $\frac{5}{16}$ "	3"	2	2	0
12 to 22"	4"	2	2	0
22 $\frac{1}{16}$ to 38"	5"	3	2	0
38 $\frac{1}{16}$ to 52"	5"	4	4	1 over 48" FBW
52 $\frac{1}{16}$ to 66"	5"	5	3	1
66 $\frac{1}{16}$ to 80"	5"	6	4	2 over 72" FBW
80 $\frac{1}{16}$ to 94"	5"	7	4	2
94 $\frac{1}{16}$ to 96"	5"	8	4	2

For Same Side Controls

16 $\frac{1}{16}$ to 26"	6"	2	2	0
26 $\frac{1}{16}$ to 40"	6"	3	2	0
40 $\frac{1}{16}$ to 54"	6"	4	4	1 over 48" FBW
54 $\frac{1}{16}$ to 68"	6"	5	3	1
68 $\frac{1}{16}$ to 80"	6"	6	4	2 over 72" FBW
80 $\frac{1}{16}$ to 94"	6"	7	4	2
94 $\frac{1}{16}$ to 96"	6"	8	4	2

Notes:

1. Maximum spacing between ladders is 14".
2. Standard control positions: Lift right/ Tilt left.
3. Maximum slat width is 96". Wider blinds must be multiple blinds.

SLAT ROUT AND LADDER COUNT

LAKE FOREST™ 2" & 2½" FAUX WOOD

Finished Blind Width	Slat End Rout	# of Ladders	# of Lifts	# of Center Brackets
9 to 10"	2¾"	2	2	0
10⅙ to 11⅙"	3"	2	2	0
12 to 19"	4"	2	2	0
19⅙ to 30"	4"	3	2	0
30⅙ to 41"	4"	4	4	0
41⅙ to 52"	4"	5	3	1 over 48" FBW
52⅙ to 63"	4"	6	4	1
63⅙ to 78"	4"	7	4	2 over 72" FBW

Notes:

1. Maximum spacing between ladders is 11" (Up to 11.67" on widths over 74").
2. Standard control positions: Lift right/ Tilt left.
3. Maximum slat width is 78". Wider blinds must be multiple blinds.

LAKE FOREST 2" FAUX WOOD NOHOLES™

Finished Blind Width	Slat End Rout	# of Ladders	# of Lifts	# of Center Brackets
9 to 10"	2¾"	2	2	0
10⅙ to 11⅙"	3"	2	2	0
12 to 19"	4"	2	2	0
19⅙ to 30"	4"	3	3	0
30⅙ to 41"	4"	4	4	0
41⅙ to 52"	4"	5	3	1 over 48" FBW
52⅙ to 63"	4"	6	4	1
63⅙ to 78"	4"	7	4	2 over 72" FBW

Notes:

1. Maximum spacing between ladders is 11" (Up to 11.67" on widths over 74").
2. Standard control positions: Lift right/ Tilt left.
3. Maximum slat width is 78". Wider blinds must be multiple blinds.

WARRANTY

Type of Warranty

Limited Lifetime on:

- ½", 1" and 2" Aluminum Horizontal Blinds, 2" headrail and components, Wood, Faux Wood and Composite Blinds, Vertical headrails, channel panels, valances, sheer fabric and painted or stained cornices (unfinished cornices or valances are not warranted).

Three year on:

- 2" vinyl slats, 2" acrylic slats, Vertical vanes (vinyl, S-shaped and fabric).

What is Covered

This product is warranted against original defects in materials or workmanship for as long as the original purchaser owns the product provided that:

1. Product was properly installed in a residential dwelling;
2. Product was made or assembled exclusively from Springs Window Fashions materials and components;
3. Springs Window Fashions recommendations were followed with regard to limitations and specifications.

Who is Covered

This warranty extends only to you as the original purchaser of the above stated product.

Obligations to the Consumer

The obligations of Springs Window Fashions are limited to the repair or replacement of parts or products found to be defective.

Springs Window Fashions is not responsible for shipping costs or labor costs, for measuring and taking the product down or for remeasuring or reinstalling the product.

If repairs are made under this warranty, the repairs will be made with like or similar parts.

Motorization

Components and accessories have a five-year limited warranty. Batteries not included.

What the Warranty Does Not Cover

This warranty does not cover conditions or damages caused by abuse, accidents, alterations, misuse or failure to follow instructions for measurement, installation, use, cleaning or maintenance. Normal wear and tear, including but not limited to the items or occurrences below, is not covered by the warranty.

- Unfinished cornices.

- When left for extended periods in direct sunlight, plastics tend to yellow or crack.
- Some slight warpage, as well as natural variations in color and grain, are normal with a wood product and are not considered defects. Areas of high humidity may cause excessive warpage of wood slats.
- Some loss of color intensity or discoloration may occur in plastic materials or wood finishes when exposed to direct sunlight over long periods of time.
- All fabrics can lose original intensity after long exposure to the sun.
- Colors may vary from lot to lot and may not exactly match samples of previous purchases.
- All cords will eventually wear out.

Springs Window Fashions considers these items and occurrences normal wear and tear and they are not covered by this warranty.

THIS WARRANTY IS EXCLUSIVE AND IN LIEU OF ALL OTHER WRITTEN OR ORAL WARRANTIES OR OBLIGATIONS AND LIABILITIES.

No person is authorized to extend or alter this warranty.

SPRINGS WINDOW FASHIONS SHALL HAVE NO LIABILITY WHATSOEVER FOR INCIDENTAL OR CONSEQUENTIAL DAMAGES.

Some states do not allow the exclusion or limitation of incidental or consequential damages, so this limitation or exclusion may not apply to you.

Service

Warranty claims must be accompanied by the original sales receipt as well as details regarding the nature of the problem, location of the product, etc. To obtain warranty service contact:

Customer Service Center
Springs Window Fashions, LLC
8467 Route 405 Highway South
PO Box 500
Montgomery, PA 17752-0500

You may also email:
windowfashions@springswindowfashions.com
or call 1-800-221-6352

CLEANING

Occasional light vacuuming with a brush attachment should keep blinds clean. More severe soiling can be removed from painted blinds by using a soft, damp cloth. Stained blinds can be treated with a lemon oil or other wood preservative.

Graber® is a brand of

SPRINGS WINDOW FASHIONS
the Best Experience Company 

Springs Window Fashions
Middleton, WI

For additional Graber products, go to graberblinds.com

19-0406-02 (4/11) 110004