

Features & Benefits

2” Fauxwood Blind

- ◆ Captures the warmth and beauty of real wood.
- ◆ Comes with universal installation brackets for easy installation.
- ◆ Will not warp, twist, fade, or peel under humid conditions.
- ◆ Superior UV resistant formulation.
- ◆ Easy to care for and easy to clean.
- ◆ Routeless option available for more privacy.
- ◆ Trapezoid bottom rail for optimal privacy.
- ◆ Innovative child-safety tassel.
- ◆ Precise tilter allows for more light control options.
- ◆ Cloth tapes available for more décor options.
- ◆ Available in 12 popular white and natural wood-tone colors.

2” Basswood Blind

- ◆ Crafted from quality basswood to ensure long lasting beauty.
- ◆ Comes with universal installation brackets for easy installation.
- ◆ The traditional finishes add elegance to any room.
- ◆ Trapezoid bottom rail for optimal privacy.
- ◆ Routeless option available for more privacy.
- ◆ Innovative child-safety tassel.
- ◆ Precise tilter allows for more light control options.
- ◆ Cloth tapes available for more décor options.
- ◆ Available in 16 beautiful white and premium stain colors.

2 1/2” Phoenix Wood Blind

- ◆ 2 1/2” slats offer less obstructions for a more impressive view.
- ◆ Comes with universal installation brackets for easy installation.
- ◆ Classic and stunning finish crafted from light weight wood.
- ◆ Ideally scaled for larger windows.
- ◆ Thick slats provide depth and dimension that accentuates the natural beauty of wood.
- ◆ Undergoes a special cutting process giving its slats added stability and a beautifully textured grain pattern.
- ◆ Routeless option available for more privacy.
- ◆ Trapezoid bottom rail for optimal privacy.
- ◆ Innovative child-safety tassel.
- ◆ Precise tilter allows for more light control options.
- ◆ Cloth tapes available for more décor options.
- ◆ Available in 16 beautiful white and premium stain colors.

Features & Benefits (con.)

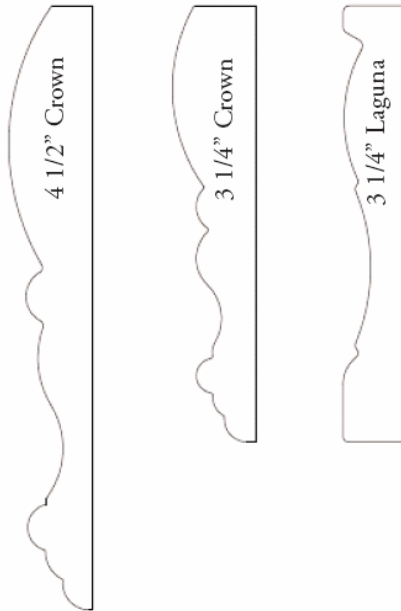
	Basswood Blinds	Phoenix® Wood Blinds	Fauxwood Blinds
Single Blind Min Width	6 1/2"	6 1/2"	6 1/2"
Single Blind Min Height	10"	10"	10"
Single Blind Max Width	96"	96"	72"
Single Blind Max Height	120"	120"	120"
Routeless**	Y	Y	Y
Cloth Tapes**	Y	Y	Y
Valances	3 1/4" Laguna* 3 1/4" Crown 4 1/2" Crown**	3 1/4" Laguna* 3 1/4" Crown 4 1/2" Crown**	3 1/4" Laguna* 3 1/4" Crown
Multiple Blinds on One Headrail**	Y	Y	Y
Cut-Outs**	Y	Y	Y

* Default Valance.

** Surcharge applies.

Components

Valances



	IB	OB	OB w/Spacers
Fauxwood Return	3/4"	3"	3 1/2"
Basswood Return	3/4"	3"	3 1/2"
Phoenix Wood Return	3/4"	3"	3 1/2"

- ◆ Valance returns are optional.
- ◆ 3 1/4" Laguna is the default valance.
- ◆ 4 1/2" Crown Valance is surcharged.
- ◆ Valances over 8 ft. wide will be spliced.

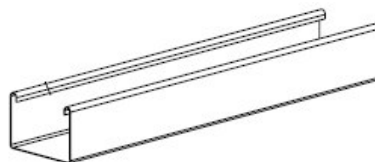
Trapezoid Bottom Rail

- ◆ This design provides better closure when blinds are tilted.
- ◆ Flushed bottom rail buttons won't harm window sill



Low Profile Headrail

- ◆ Steel



General Product Specifications

Size Standards

Blind Type			Width		Height	
			Minimum	Maximum	Minimum	Maximum
Single Blind	Traditional	Fauxwood	6 1/2"	72"	10"	120"
		Basswood	6 1/2"	96"	10"	120"
		Phoenix Wood	6 1/2"	96"	10"	120"
Multiple Blinds On One Headrail	2-on-1 Headrail	Fauxwood	30"	144"	10"	120"
		Basswood	30"	144"	10"	120"
		Phoenix Wood	30"	144"	10"	120"
	3-on-1 Headrail	Fauxwood	45"	144"	10"	120"
		Basswood	45"	144"	10"	120"
		Phoenix Wood	45"	144"	10"	120"

- ◆ Due to weight limitations it is recommended that blinds to the right of the solid line on the price grids have Multiple Blinds on One Headrail.

General Product Specifications

Cord Control Options

	Tilt Cord/ Wand*	Pull Cord
Standard	Left	Right
Optional	Right	Left
Optional	Right	Right
Optional	Left	Left

- ◆ 6 1/2" - 6 7/8" No controls. Blinds fixed at 45 degrees.
- ◆ 7" - 12 7/8" Center Tilt only.
- ◆ 13" - 19 7/8" Controls can be split. One on each side.
- ◆ 20" and over Controls may be split or one on each side.
- ◆ Multiple blinds on one headrail must have separate cord controls for each blind.

*Wands are available at no charge on fauxwood and basswood blinds.

Options

Cloth Tapes

Solid color cloth tapes are available for both 2" & 2 1/2" Blinds.

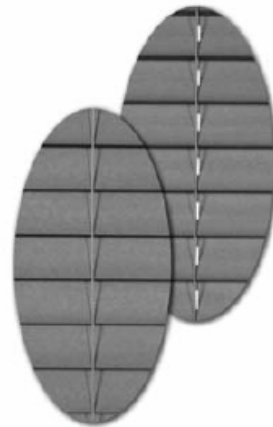
Cloth Tapes for 2" Blinds	
100 Natural	378 Cocoa
113 Duck White	414 Cornsilk
203 Pink	430 Wheat
292 Pompeii	503 Celadon
293 Bordeaux	504 Moss
298 Maroon	572 Forest
302 Taupe	597 Dark Green
322 Light Beige	627 Provence Blue
323 Dark Beige	652 Alice Blue
336 Toffee	685 Midnight Blue
376 Chocolate	899 Black

Cloth Tapes for 2 1/2" Blinds	
100 Natural	376 Chocolate
322 Light Beige	378 Cocoa
323 Dark Beige	685 Midnight Blue
336 Toffee	899 Black

Options

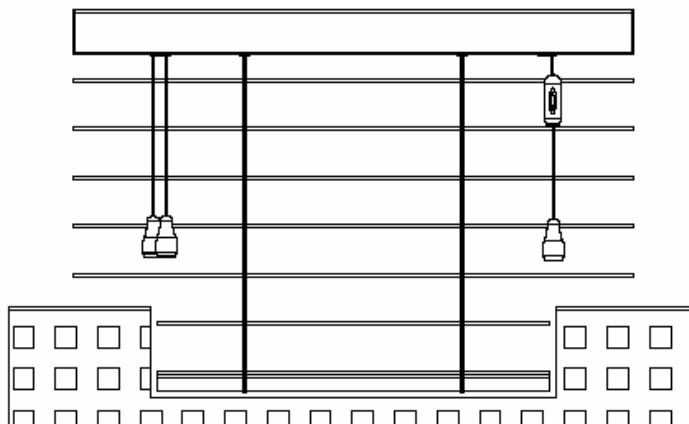
Routing Options

The standard routed and an upgraded Routeless options are available.



Cut Out Blinds

- ◆ The cut-out option is used to avoid obstructions.
- ◆ Cut out widths in from each side is not to exceed 2" .
- ◆ Lengths are measured up from the bottom of the window sill.

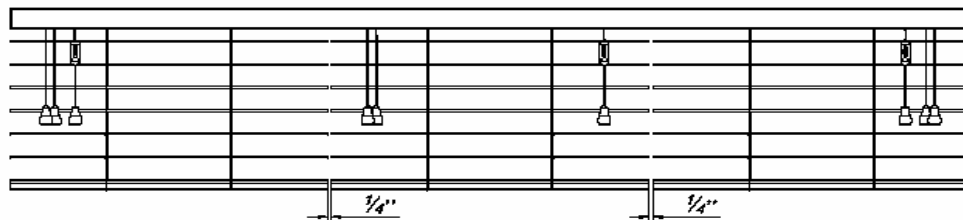
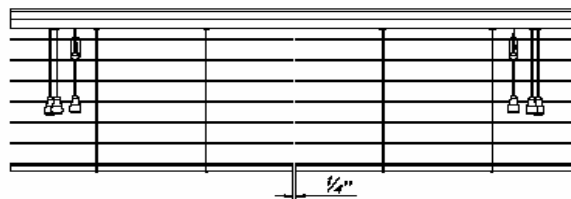


Options

Multiple Blinds On One Headrail

- ◆ Due to weight limitations larger windows and sliding patio doors require 2-on-1 or 3-on-1 blinds.
- ◆ Total Blind Width = Width of each blind + Clearance Gap
- ◆ For blind sizes that require these options refer to the price grids.
- ◆ The gap between each blind will be 1/4".
- ◆ Each blind must have separate cord controls.
- ◆ Slat alignment between blinds is not guaranteed.

Blind Option	Standard Cord Controls					
	Left Blind		Center Blind		Right Blind	
	Tilt Cord/Wand	Pull Cord	Tilt Cord/Wand	Pull Cord	Tilt Cord/Wand	Pull Cord
2-on-1	Left	Left	-	-	Right	Right
3-on-1	Left	Left	Left	Right	Right	Right



D-2

Options

Corner Blinds & Bay Window Blinds

- ◆ Corner blinds and bay window blinds are joined together in a corner or bay window.
- ◆ Each individual blind has its own headrail and cord controls.
- ◆ It's recommended that the controls are located opposite the corner.
- ◆ Depending on the angle, some corner shades cannot be raised to the same height.
- ◆ Slat alignment between blinds is not guaranteed.

