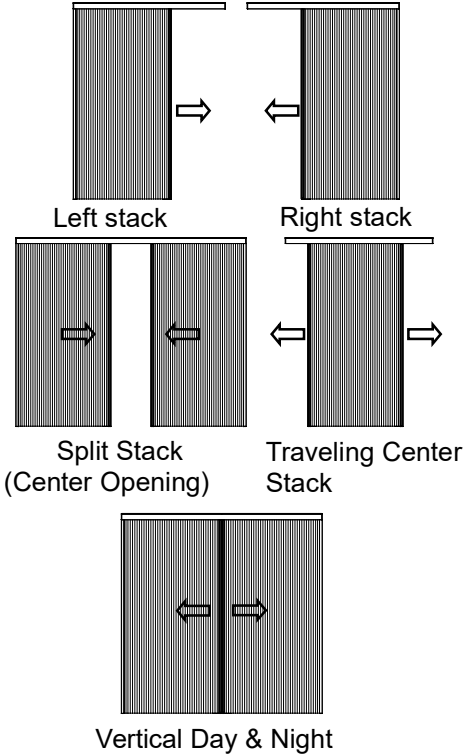


N301174-8  
65101-11916-H

**Installation Instructions**  
**Honeycomb Shades**  
**Patio Door Vertical & Vertical Day&Night**



**Getting Started**

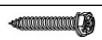


Remove the shade from the package. Save the packaging until the shade is installed and working to your satisfaction.

**Tools Needed :**

- Power drill and drill bit
- Measuring tape
- Screwdriver
- Level
- Pencil
- Pliers



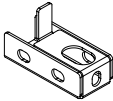
You will need to use the following fasteners for your particular mounting surface.

Surface	Fastener
Wood	1 1/4" Hexagonal Head Screws (Provide) 
Drywall/Plaster	Wall Anchors, Expansion Bolts (Not Provide) 
Metal	Sheet Metal Screws (Not Provide) 

**Check Component/Hardware:**



Installation Bracket



Floor Bracket



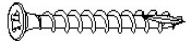
Bolt



Hanger  
Same as clip qty



1 1/4" Screw for Bracket



M3.8 Screw &  
adjustment sheet(IM)

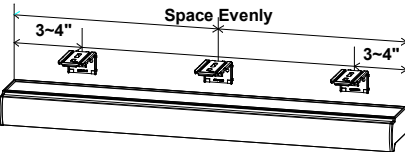


Spacer Block (Optional)

**Step 1: Bracket Installation**

Measure 3"~4" from both ends of the head rail. Evenly space the brackets and mark the locations on the mounting surface. Proper alignment of brackets will make installation easier.

a. Headrail - no split



For non-split rail:  
 $X \leq 39"$  x 2  
 $39" < X \leq 66"$  x 3  
 $66" < X \leq 93"$  x 4  
 $93" < X \leq 120"$  x 5  
For split rail:  
 $84" < X \leq 93"$  x 4  
 $93" < X \leq 146"$  x 6

Right stack x1  
Left stack x1  
Split Stack (Center Opening) x 2  
Vertical Day & Night x 2

Right stack x 1  
Left stack x 1  
Traveling Center Stack x 2  
Split Stack(Center Opening) x 2  
Vertical Day & Night x 2

For non-split rail:  
 $X \leq 39"$  x 2  
 $39" < X \leq 66"$  x 3  
 $66" < X \leq 93"$  x 4  
 $93" < X \leq 120"$  x 5  
For split rail:  
 $84" < X \leq 93"$  x 4  
 $93" < X \leq 146"$  x 6

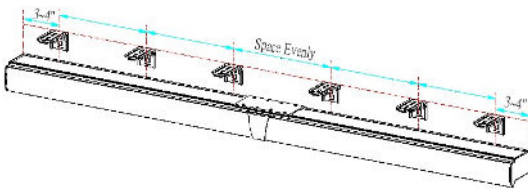
Adjustment Sheet (IM)  
(Optional)

Installation bracket qty x 2  
(Hexagonal Head)  
+  
Floor bracket qty (round head screw)

$X \leq 39"$  x2  
 $39" < X \leq 66"$  x3  
 $66" < X \leq 93"$  x4  
 $93" < X \leq 97 \ 5/8"$  x5  
 $97 \ 5/8" < X \leq 146"$  x6

1pc to extend distance 3/8"  
2pcs to extend distance 11/16"

b. Headrail - split evenly (Included Connector\*1pc & Keystone\*1pc)

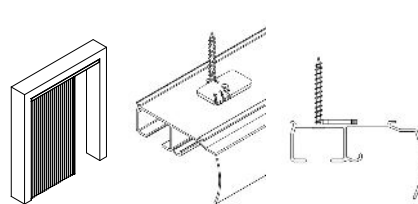


**Inside Mount:**

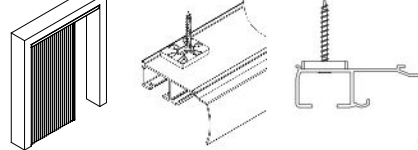
**Option 1: Without installation brackets**

Put the provided adjustment sheet next to screw hold on head rail. Secure the head rail with M3.8 screws to the top of window frame. Use wall anchors for drywall or plaster wall.

a. Headrail - no split

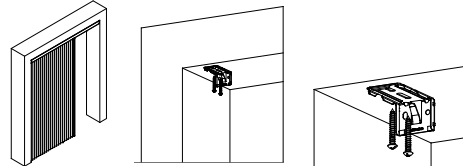


b. Headrail – split evenly



**Option 2: With installation brackets**

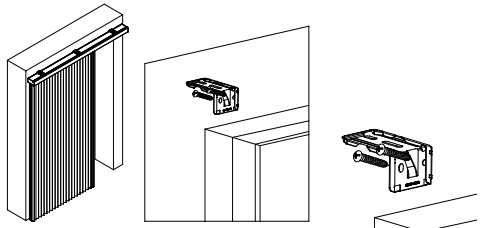
Align the front of bracket flush against the wall. Secure each bracket with two 1 1/4" mounting screws. Use wall anchors for drywall or plaster wall.



One finished, go to Step 2: Shade Installation.

**Outside Mount:**

Position the top of bracket at order height +1/8". Use two 1 1/4" mounting screws (Hexagonal Head) to secure brackets. Use wall anchors for drywall or plaster wall.

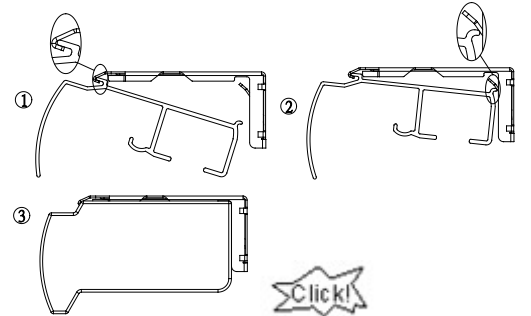


**Step 2: Shade Installation**

a. Position head rail at an angle so that it hooks into the front of the brackets. Then push upward to snap the head rail into the brackets.

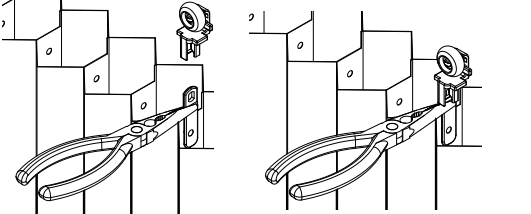
⚠ For proper installation, start by attaching the front rail to the bracket and ensure to stick right in place.

**Note: You will hear a click sound once the head rail is properly secured.**



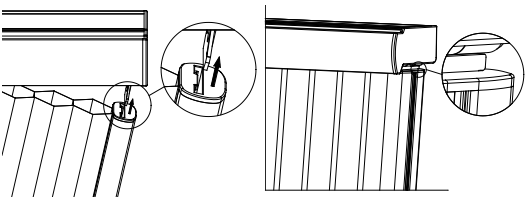
b. Attach the hangers (found in the hardware box) to the clips (pre-attached on the blanket) at the top of the shade.

For convenient operation, reverse the shade when opening the package and face to the back of blanket.

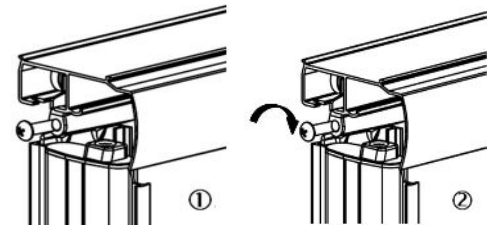


c. Install fixed vertical rail

Push the fixed vertical rail from down to up as below drawing shows. Attach fixed vertical rail by pushing the fixing hanger into the gap of head rail as the drawing shows.



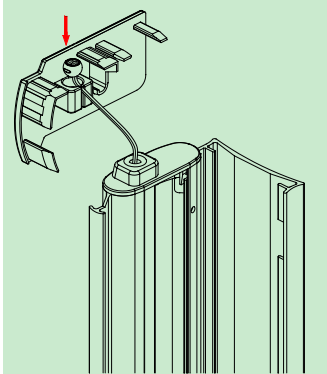
d. Install movable vertical rail  
Align the hanger shaft hole with the sliding supporting shaft hole, and insert the bolt into the shaft hole completely(①). Tighten the bolt completely (②).



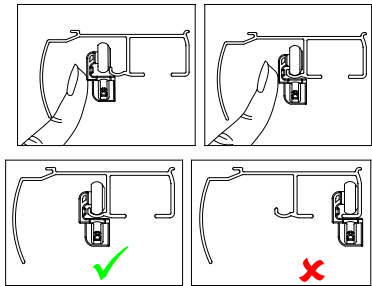
e. Untie the cords. Put the buckle bead into groove of headrail end cap on the movable rail side (make sure the buckle bead goes into the groove top down) as drawing shows.

**Notes:** 1. For Left Stack, Split Stack (Center Opening) left shade and Day & Night left shade, put the buckle bead into groove of right headrail end cap.  
2. For Right Stack, Split Stack (Center Opening) right shade and Day & Night right shade, put the buckle bead into groove of left headrail end cap.  
3. For Traveling Center Stack, put the buckle bead from right movable rail into groove of right head rail end cap; put the buckle bead from left movable rail into groove of left head rail end cap.

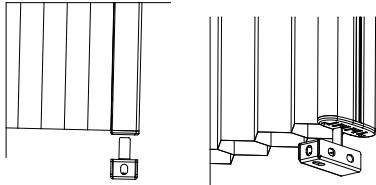
⚠ Please make sure the cord end and the buckle bead are on the upward side of the groove.



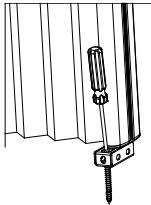
f. Press hangers onto the head rail from the front of the shade. Make sure the hangers are in the front of the middle groove in head rail.



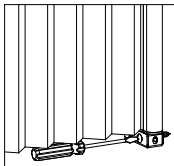
g. Attach the floor bracket to the end cap of fixed vertical rail, shown in left drawing shows.



Make sure the rail is aligned straight with the floor and wall. With the provided screw, secure the floor bracket to the floor or to the wall shown below. Floor bracket has been pre-attached to the end cap of fixed vertical rail.

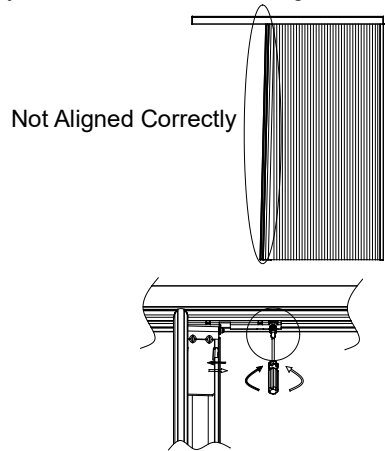


Into the Floor

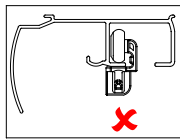


Into the Wall

h. If the vertical rail is not aligned straight up and down, adjustment is necessary. Tighten or loosen the screw to adjust the movable rail so it is aligned straight.

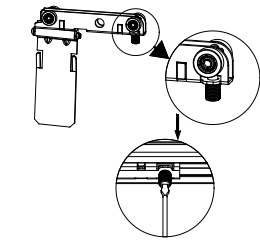


Not Aligned Correctly

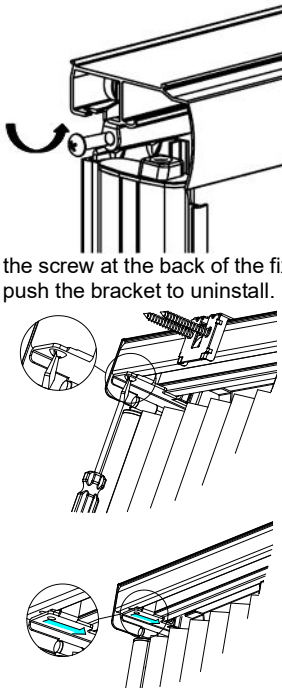


## Shade Removal

a. Unloosen the bolt from the shaft hole.

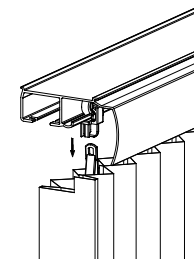


b. Loosen the screw at the back of the fixed vertical rail and push the bracket to uninstall.

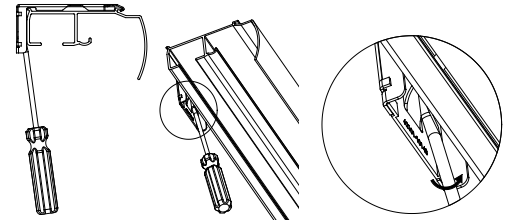


c. Use the reverse steps to uninstall the shade

**Note: Separate clips from hangers as below drawing shows, and leave the hangers on head rail.**



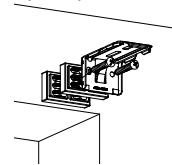
Gently pry the brackets off the head rail with a flat screwdriver as next diagram shows.



## Installation of spacer block (for OB)

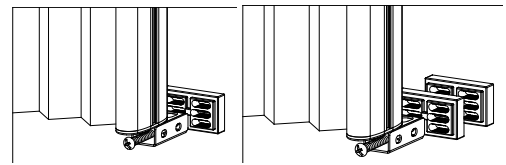
**For installation bracket:** Install the spacer block (1pc or 2pcs) in the back of the installation bracket as the next diagram shows.

Extend up to 3/8" for 1pc spacer block. Extend up to 11/16" for 2pcs spacer block.



**For floor bracket:** Install the spacer block (1pc or 2pcs) at the backside of the Floor bracket as the next diagram shows.

Extend up to 3/8" for 1pc spacer block. Extend up to 11/16" for 2pcs spacer block.



⚠ **Spacer block will be provided only when customer request.**

Optional Parts Installation

Side Mount Bracket

Side mount bracket is only available for the arch window with shade width  $\leq 37"$  and the normal bracket qty should be 2.

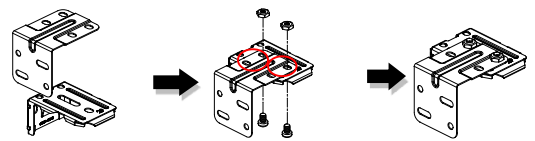


Hardware Standard Quantity

Shade Width (X)	X $\leq 37"$
Installation Bracket	2
1 1/4" Screw for Installation Bracket	4
Side Mount Supporting Bracket	2
M4 Nut & Bolt	4 sets

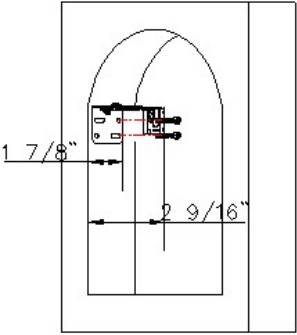
How to assemble side mount bracket

Align the side mount supporting bracket holes with the installation bracket holes, and then screw the M4 nut & bolt into the diagonal holes for the left side mount bracket. Do the same for the right side mount bracket.



How to install side mount bracket

Put two 1 1/4" mounting screws into the diagonal holes to secure bracket. Use wall anchors for drywall or plaster wall.

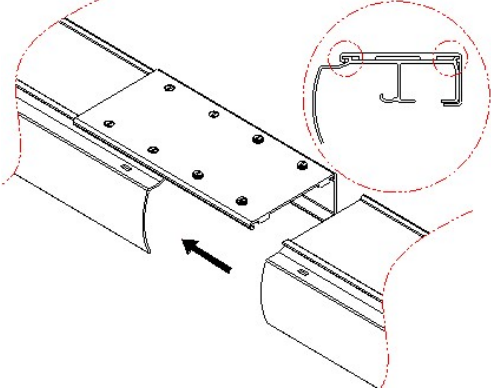


3/4"Single & 1 1/4"Single  
Note: For the shade installation, please refer to the installation instruction sheet in the hardware box.

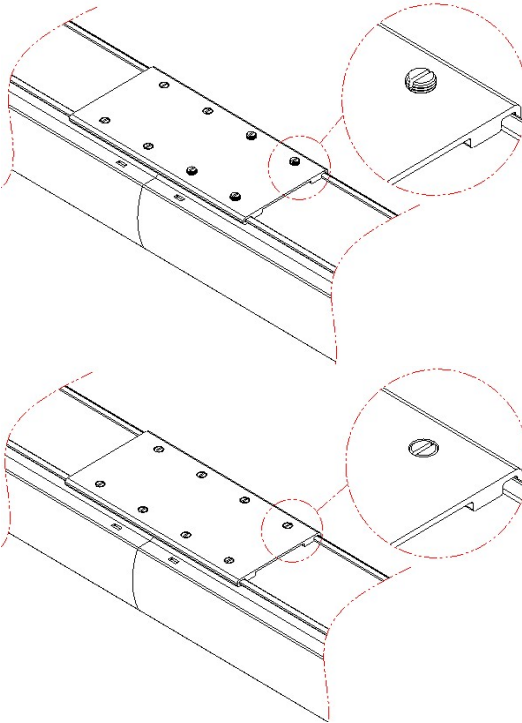
Headrail Connector and Keystone Installation:

Headrail Connector

Step 1: Align the rails, and push the rail to the connector.



Step 2: Tighten the screws on the connector.



Keystone

Peel off the double-sided adhesive tape on the back of keystone, and align keystone's hooks to the holes on the headrail, and slightly press the keystone to make it stick on the headrail.

Some options listed may not be applicable.

